

WAAS CH 56309 W03A	APP CRS 029°	Rwy ldg TDZE Apt Elev	5498 940 947
--	------------------------	-----------------------------	---

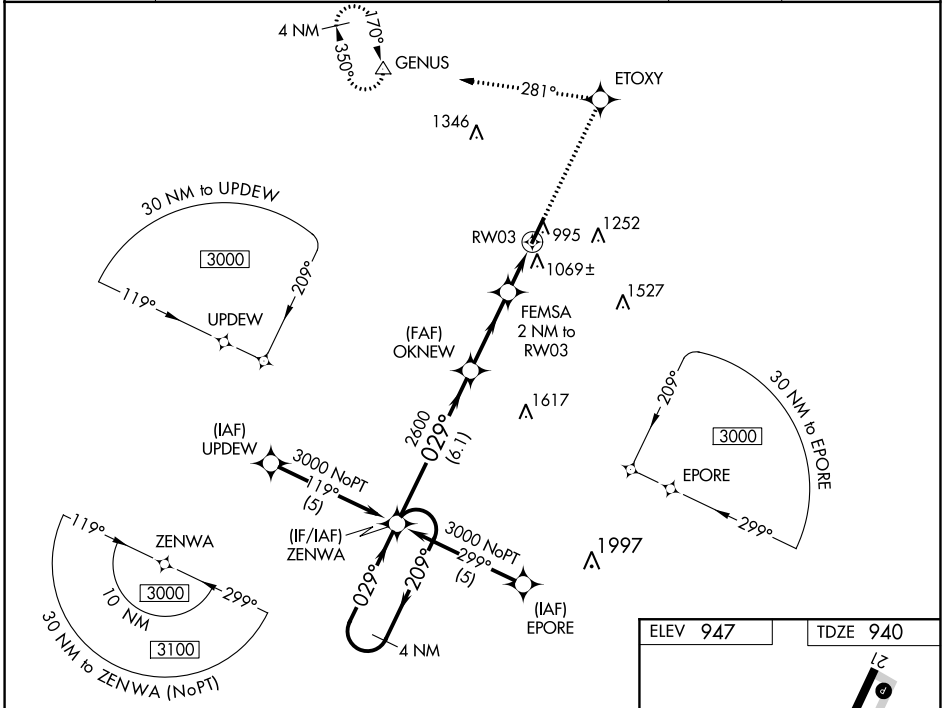
RNAV (GPS) RWY 3

GEORGETOWN-SCOTT COUNTY RGNL (27K)

⚠ NA For uncompensated Baro-VNAV systems, LNAV/VNAV NA below -16° C (4° F) or above 47° C (116° F). DME/DME RNP-0.3 NA. When local altimeter setting not received, use Lexington altimeter setting and increase LPV DA to 1178, LNAV/VNAV DA to 1413, and all MDA 40 feet; increase LPV and LNAV/VNAV visibility all Cats and LNAV Cat C and Circling Cat D visibility 1/4 mile. Baro-VNAV and VDP NA when using Lexington altimeter setting.

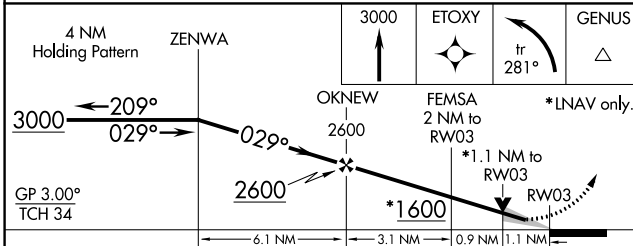
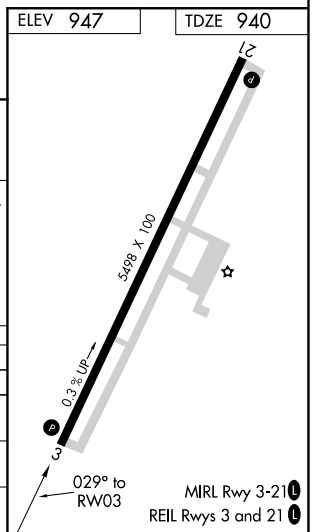
MISSED APPROACH: Climb to 3000 direct ETOXY and left turn on track 281° to GENUS and hold.

AWOS-3 119.975	LEXINGTON APP CON 120.15 259.3 (040° - 220°) 120.75 298.9 (221° - 039°)	CLNC DEL 127.425	UNICOM 123.0 (CTAF) 0
--------------------------	---	----------------------------	---------------------------------



SE-1, 09 SEP 2021 to 07 OCT 2021

SE-1, 09 SEP 2021 to 07 OCT 2021



CATEGORY	A	B	C	D
LPV DA	1140-3/4		200 (200-3/4)	
LNAV/ VNAV	1375-1 1/2		435 (500-1 1/2)	
LNAV MDA	1320-1 380 (400-1)		1320-1 1/4 380 (400-1 1/4)	
CIRCLING	1420-1 473 (500-1)		1420-1 1/2 473 (500-1 1/2) 1580-2 633 (700-2)	