

|                                 |                        |                             |   |
|---------------------------------|------------------------|-----------------------------|---|
| WAAS<br>CH <b>53518</b><br>W17A | APP CRS<br><b>174°</b> | Rwy Idg<br>TDZE<br>Apt Elev | <b>3898</b><br><b>822</b><br><b>824</b> |
|---------------------------------|------------------------|-----------------------------|---|

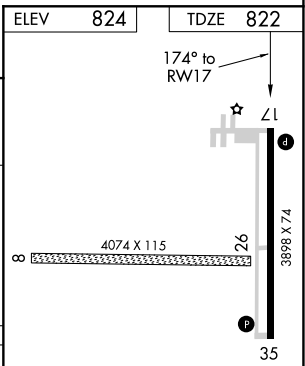
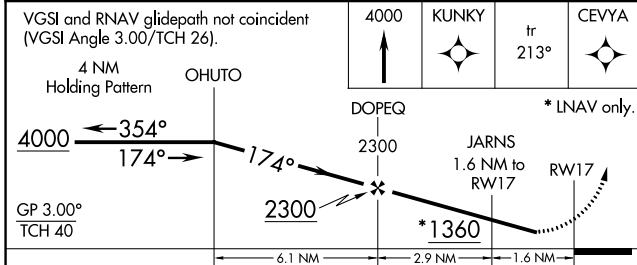
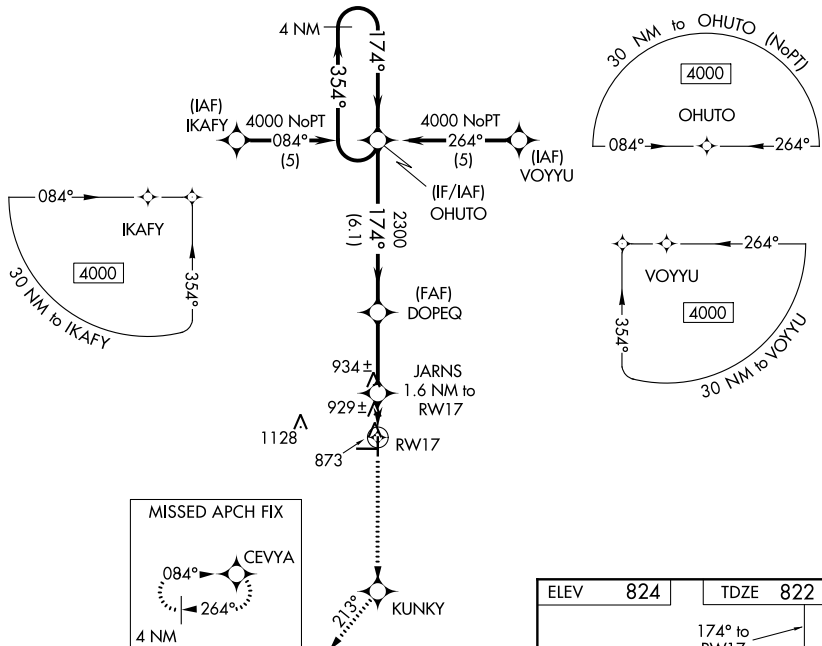
# RNAV (GPS) RWY 17

HUTSON FLD (GAF)

**NA** For uncompensated Baro-VNAV systems, LNAV/VNAV NA below -1.6°C (4°F) or above 54°C (130°F). DME/DME RNP-0.3 NA. Visibility reduction by helicopters NA. When local altimeter setting not received, use Grand Forks Intl altimeter setting and increase all DA 69 feet and all MDA 80 feet. Increase LPV and LNAV/VNAV all Cats and LNAV Cat C visibility ¼ mile. Baro-VNAV NA when using Grand Forks Intl altimeter setting.

**MISSED APPROACH:** Climb to 4000 direct KUNKY and on track 213° to CEVYA and hold, continue climb-in-hold to 4000.

|                          |   |                               |
|--------------------------|---|-------------------------------|
| AWOS-3<br><b>118.625</b> | GRAND FORKS APP CON *<br><b>118.1 318.1</b> | UNICOM<br><b>122.8 (CTAF)</b> |
|--------------------------|---|-------------------------------|



| CATEGORY     | A       | B            | C                       | D  |
|--------------|---------|--------------|-------------------------|----|
| LPV DA       | 1072-1  | 250 (300-1)  |                         | NA |
| LNAV/VNAV DA | 1228-1½ | 406 (500-1½) |                         | NA |
| LNAV MDA     | 1200-1  | 378 (400-1)  |                         | NA |
| CIRCLING     | 1340-1  | 516 (600-1)  | 1340-1½<br>516 (600-1½) | NA |

MIRL Rwy 17-35

NC-1, 09 SEP 2021 to 07 OCT 2021

NC-1, 09 SEP 2021 to 07 OCT 2021