

WAAS CH <b>97724</b> <b>W18A</b>	APP CRS <b>185°</b>	Rwy Idg TDZE <b>247</b> Apt Elev <b>247</b>	<b>3499</b>
--	------------------------	---	-------------

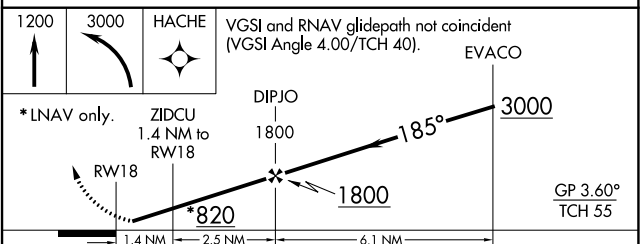
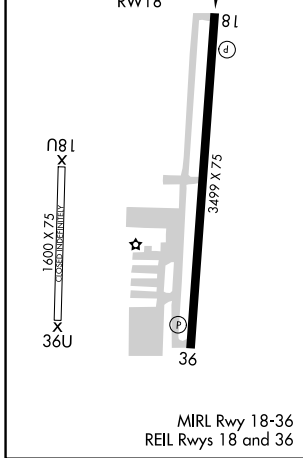
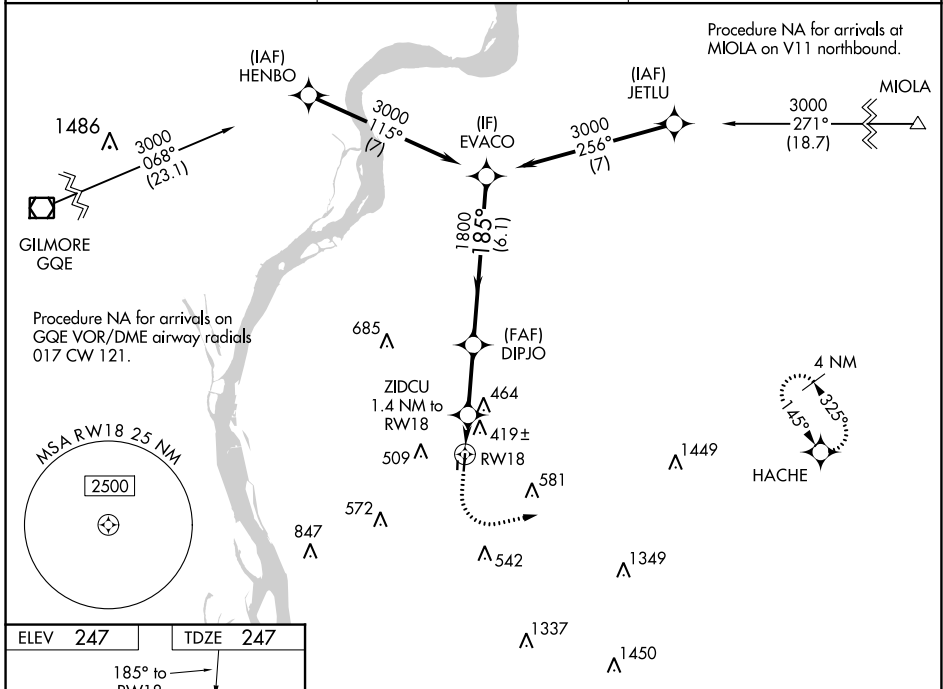
# RNAV (GPS) RWY 18

CHARLES W BAKER (2M8)

**NA** Baro-VNAV NA. DME/DME RNP-0.3 NA. When local altimeter setting not received, use Millington Rgnl Jetport altimeter setting and increase all DA 24 feet; increase all MDA 40 feet and LNAV Cat C visibility 1/8 mile. Rwy 18 helicopter visibility reduction below 3/4 SM NA.

MISSED APPROACH: Climb to 1200 then climbing left turn to 3000 direct HACHE and hold.

AWOS-AV <b>122.8</b>	MEMPHIS APP CON <b>125.8 338.3</b>	UNICOM <b>122.8 (CTAF)</b>
-------------------------	---------------------------------------	-------------------------------



CATEGORY	A	B	C	D
LPV DA	601-1 354 (400-1)			NA
LNAV/VNAV DA	733-1 3/8 486(500-1 3/8)			NA
LNAV MDA	680-1 433 (500-1)		680-1 1/4 433 (500-1 1/4)	NA
CIRCLING	740-1 493 (500-1)	780-1 533 (600-1)	860-1 3/4 613 (700-1 3/4)	NA

SE-1, 09 SEP 2021 to 07 OCT 2021

SE-1, 09 SEP 2021 to 07 OCT 2021