

| | |
|------------------------|------------------------|
| APP CRS 281° | Rwy Idg 3705 |
| | TDZE 686 |
| | Apt Elev 686 |

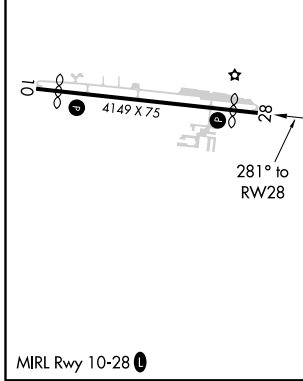
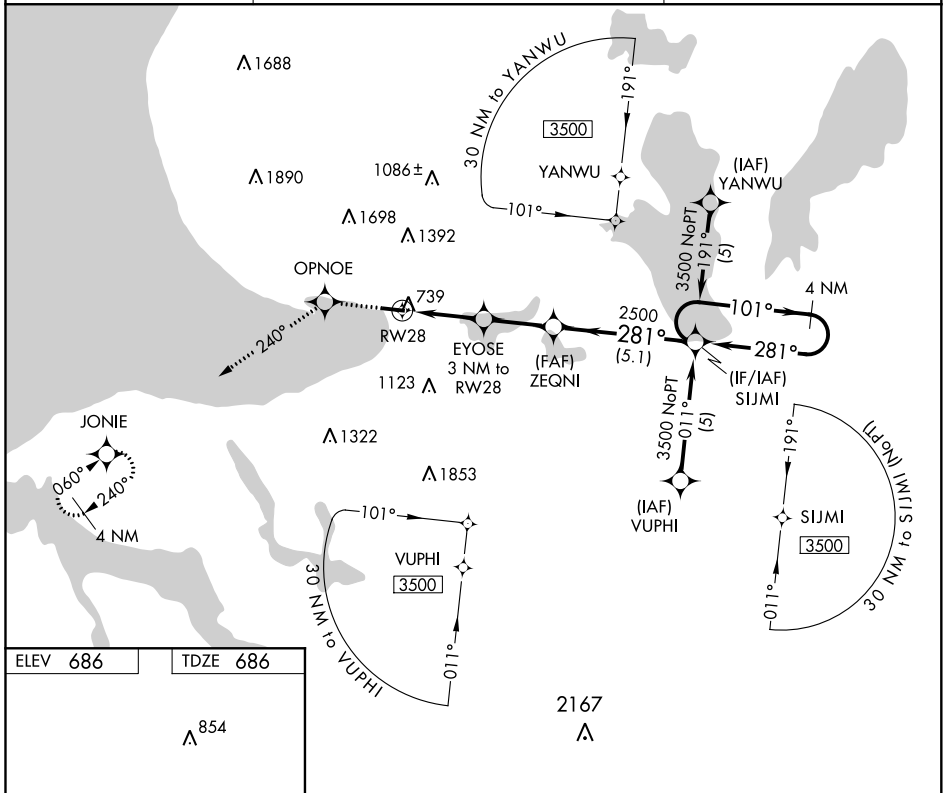
RNAV (GPS) RWY 28

HARBOR SPRINGS (MGN)

⚠ DME/DME RNP-0.3 NA. Helicopter visibility reduction below 1 SM NA. When local altimeter setting not received, use Pellsion altimeter setting and increase all MDAs 40 feet. Procedure NA at night.

⚠ MISSED APPROACH: Climb to 3400 direct OPNOE and via 240° track to JONIE and hold.

| | | |
|--------------------------|---|--|
| AWOS-3 119.925 | MINNEAPOLIS CENTER 134.6 354.05 | UNICOM 122.8 (CTAF) 📻 |
|--------------------------|---|--|



| | | | | |
|---|-----------------------|-------------------------|--|---|
| 3400 | OPNOE | JONIE | VGSI and descent angles not coincident (VGSI Angle 4.00/TCH 35). | |
| ↑ | ✧ tr 240° | ✧ | 4 NM Holding Pattern | |
| | | | SIJMI | |
| RW28 3 NM to RW28 EYOSE 3 NM to RW28 ZEQNI 2500 1680 3.05° TCH 35 101° → 3500 ← 281° | | | 101° → ← 281° | |
| 3 NM 2.5 NM 5.1 NM | | | | |
| CATEGORY | A | B | C | D |
| LNAV MDA | 1120-1 | 434 (500-1) | NA | |
| CIRCLING | 1380-1 694 (700-1) | 1500-1¼ 814 (900-1¼) | NA | |

EC-1, 09 SEP 2021 to 07 OCT 2021

EC-1, 09 SEP 2021 to 07 OCT 2021