

WAAS CH 53403 W18A	APP CRS 180°	Rwy Idg TDZE Apt Elev	5000 1314 1314
--	------------------------	-----------------------------	---

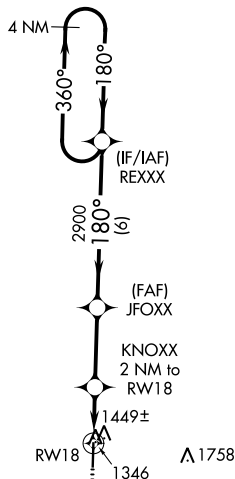
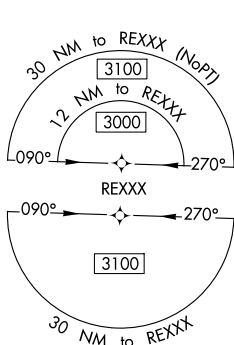
RNAV (GPS) RWY 18

MONETT RGNL (HFJ)

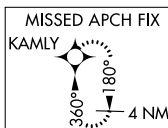
▼ Baro-VNAV NA when using Joplin Rgnl altimeter setting. For uncompensated Baro-VNAV systems, LNAV/VNAV NA below -17°C (2°F) or above 54°C (130°F). When local altimeter setting not received, ▲ use Joplin Rgnl altimeter setting: increase all DA 111 feet and all MDA 120 feet; increase LPV visibility All Cats to 1¼; LNAV/VNAV all Cats and LNAV Cats C visibility to 1¾ and Circling Cat C visibility to 2. DME/DME RNP-0.3 NA.

MISSED APPROACH: Climb to 3100 direct KAMLY and hold.

AWOS-3 118.275	SPRINGFIELD APP CON 124.95 318.2	CLNC DEL 121.85	UNICOM 123.075 (CTAF) ①
--------------------------	--	---------------------------	-----------------------------------



▲ 1899

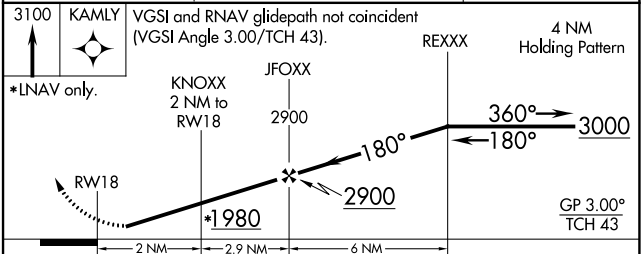


NC-3, 09 SEP 2021 to 07 OCT 2021

NC-3, 09 SEP 2021 to 07 OCT 2021

ELEV 1314	TDZE 1314
-----------	-----------

MIRL Rwy 18-36 ①
REIL Rwy 18 ①



CATEGORY	A	B	C	D
LPV DA	1564-¾	250 (300-¾)	1564-1 250 (300-1)	NA
LNAV/VNAV DA	1619-1 305 (400-1)			NA
LNAV MDA	1700-1 386 (400-1)			NA
① CIRCLING	1760-1 446 (500-1)	1900-1 586 (600-1)	1900-1½ 586 (600-1½)	NA