

# RNAV (GPS) RWY 7

BLAIRSTOWN (1N7)

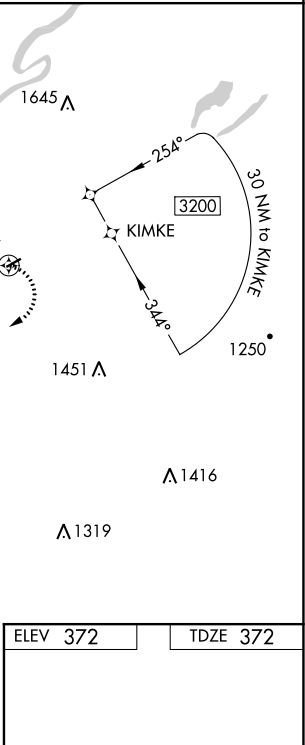
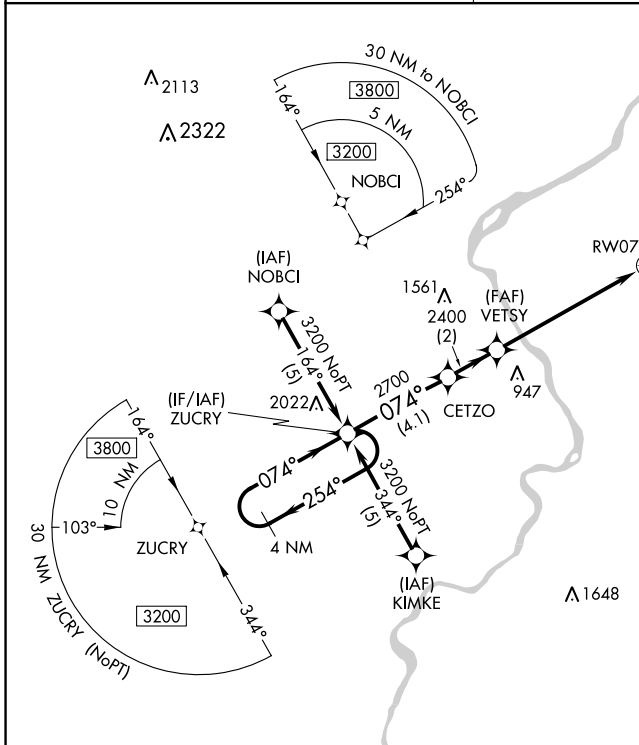
APP CRS <b>074°</b>	Rwy Idg TDZE Apt Elev	<b>2794</b> <b>372</b> <b>372</b>
------------------------	-----------------------------	---

RNP APCH.  
 ▼ When local altimeter setting not received, use Lehigh Valley altimeter setting. Procedure NA at night. Rwy 7 helicopter visibility reduction below 1 SM NA.  
 ▲ NA

MISSED APPROACH: Climbing right turn to 3200 direct ZUCRY and hold.

NEW YORK APP CON  
**127.6 379.9**

UNICOM  
**123.0 (CTAF) 0**



ELEV 372	TDZE 372

Visual Segment - Obstacles				3200	ZUCRY
4 NM Holding Pattern	ZUCRY	CETZO	VETSYS	RW07	
3200	254°	074°	074°		
		2700	2400		
		4.1 NM	2 NM	6.2 NM	
CATEGORY	A	B	C	D	
LNAV MDA	1140-1 768 (800-1)	1140-1¼ 768 (800-1¼)	NA	NA	
LEHIGH VALLEY ALTIMETER SETTING MINIMUMS					
LNAV MDA	1420-1¼ 1048 (1100-1¼)	1420-1½ 1048 (1100-1½)	NA	NA	

NE-2, 09 SEP 2021 to 07 OCT 2021

NE-2, 09 SEP 2021 to 07 OCT 2021