

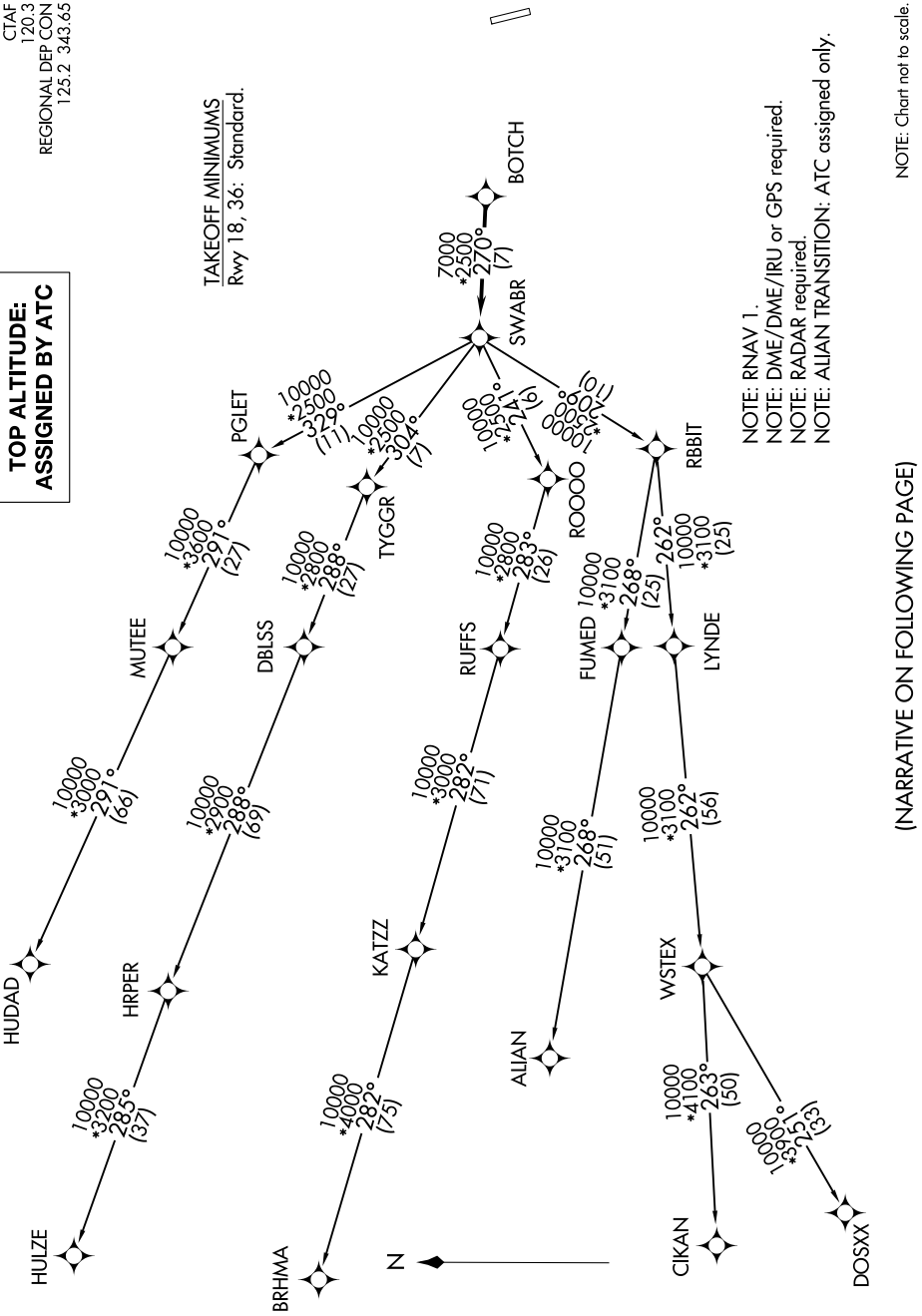
SWABR EIGHT DEPARTURE (RNAV)

SC-2, 09 SEP 2021 to 07 OCT 2021

CTAF
120.3
REGIONAL DEP CON
125.2 343.65

**TOP ALTITUDE:
ASSIGNED BY ATC**

TAKEOFF MINIMUMS
Rwy 18, 36: Standard.



NOTE: RNAV 1.
 NOTE: DME/DME/IRU or GPS required.
 NOTE: RADAR required.
 NOTE: ALIAN TRANSITION: ATC assigned only.

NOTE: Chart not to scale.

(NARRATIVE ON FOLLOWING PAGE)

SC-2, 09 SEP 2021 to 07 OCT 2021

SWABR EIGHT DEPARTURE (RNAV)