

LOC/DME I-HQZ <b>109.75</b> Chan <b>34</b> (Y)	APP CRS <b>178°</b>	Rwy Idg <b>6000</b> TDZE <b>447</b> Apt Elev <b>447</b>
--	------------------------	---

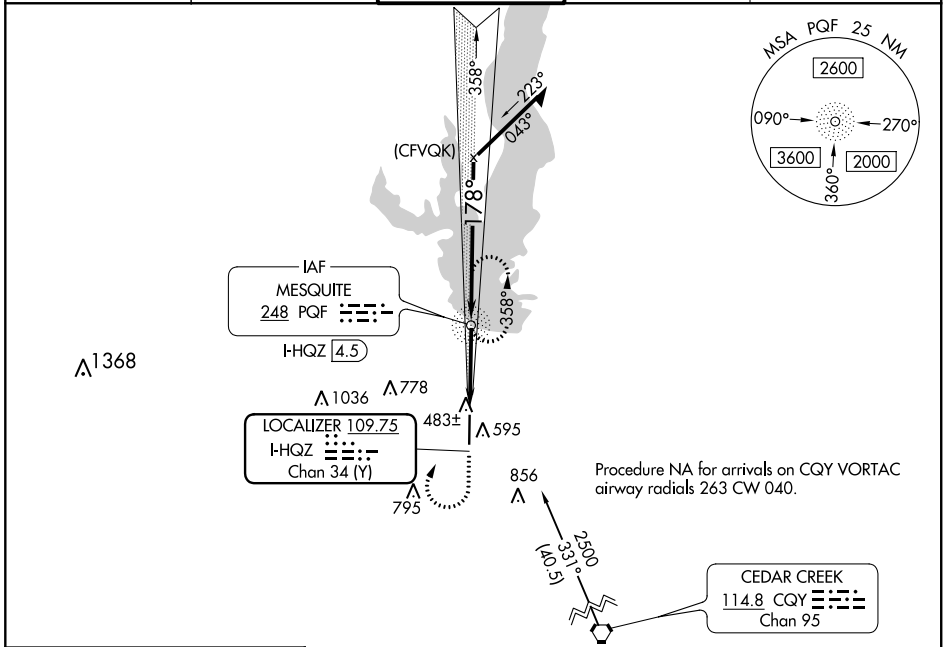
# ILS or LOC RWY 18

MESQUITE METRO (HQZ)

**V** VDP NA with Dallas Love Fld altimeter setting.  
**A** When local altimeter setting not received, use Dallas Love Fld altimeter setting.  
 ADF Required.

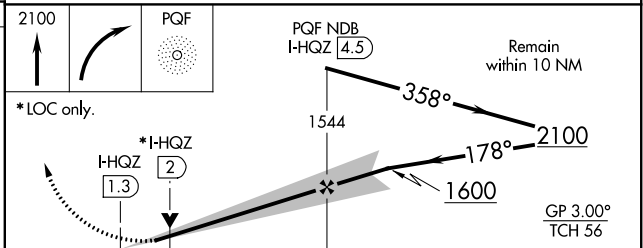
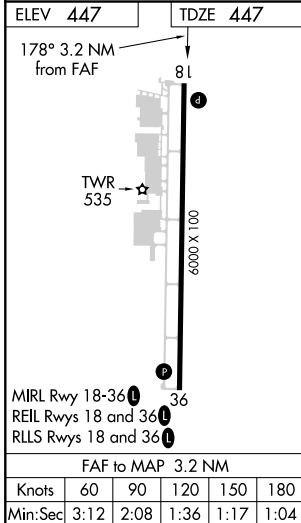
MISSED APPROACH: Climb to 2100 then right turn direct PQF NDB and hold.

AWOS-3 <b>118.175</b>	REGIONAL APP CON <b>125.2 343.65</b>	MESQUITE TOWER★ <b>120.3</b> (CTAF) <b>0</b>	GND CON <b>118.85</b>	UNICOM <b>123.05</b>
--------------------------	---	---	--------------------------	-------------------------



SC-2, 09 SEP 2021 to 07 OCT 2021

SC-2, 09 SEP 2021 to 07 OCT 2021



CATEGORY	A	B	C	D
S-ILS 18	697- <sup>3</sup> / <sub>4</sub> 250 (300- <sup>3</sup> / <sub>4</sub> )			NA
S-LOC 18	740-1	293 (300-1)	740- <sup>7</sup> / <sub>8</sub> 293 (300- <sup>7</sup> / <sub>8</sub> )	NA
<b>C</b> CIRCLING	960-1	513 (600-1)	1160-2 713 (800-2)	NA
DALLAS-LOVE FLD ALTIMETER SETTING MINIMUMS				
S-ILS 18	743- <sup>7</sup> / <sub>8</sub> 296 (300- <sup>7</sup> / <sub>8</sub> )			NA
S-LOC 18	800-1 353 (400-1)			NA
<b>C</b> CIRCLING	1020-1	573 (600-1)	1220-2 <sup>1</sup> / <sub>4</sub> 773 (800-2 <sup>1</sup> / <sub>4</sub> )	NA