

WAAS CH 81999 W35A	APP CRS 356°	Rwy Idg 5006 TDZE 472 Apt Elev 474
----------------------------------------	------------------------	---------------------------------------------------------------

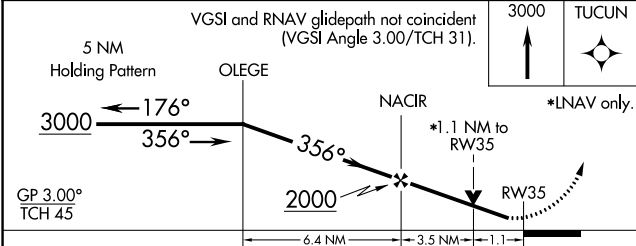
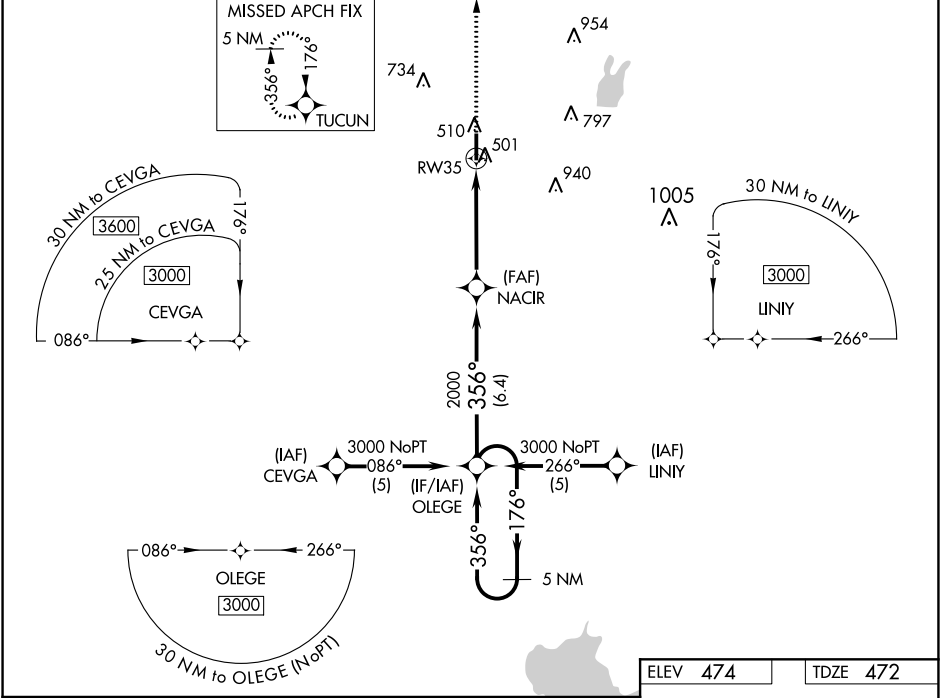
RNAV (GPS) RWY 35

TERRELL MUNI (TRL)

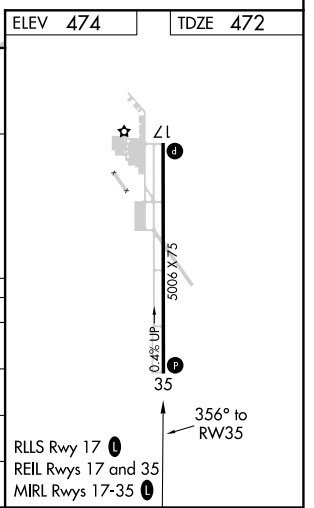
Baro-VNAV and VDP NA when using Dallas Love Fld altimeter setting. For uncompensated Baro-VNAV systems, LNAV/VNAV NA below -7°C (20°F) or above 54°C (130°F). DME/DME RNP-0.3 NA. When local altimeter setting not received, use Dallas Love Fld altimeter setting and increase all DA 73 feet and all MDA 80 feet; increase LPV all Cats, LNAV/VNAV all Cats, LNAV Cat C and Circling Cat C visibility 1/4 mile. Helicopter visibility reduction below 3/4 SM NA.

MISSED APPROACH: Climb to 3000 direct TUCUN and hold.

ASOS 119.275	FORT WORTH CENTER 132.025 360.75	UNICOM 122.8 (CTAF) 0
------------------------	--------------------------------------------	---------------------------------



CATEGORY	A	B	C	D
LPV DA	730-7/8	258 (300-7/8)		NA
LNAV/VNAV DA	801-1 1/8	329 (400-1 1/8)		NA
LNAV MDA	820-1	348 (400-1)		NA
CIRCLING	980-1 506 (600-1)	1020-1 546 (600-1)	1100-1 1/4 626 (700-1 1/4)	NA



SC-2, 09 SEP 2021 to 07 OCT 2021

SC-2, 09 SEP 2021 to 07 OCT 2021