

WAAS CH 77699 W17A	APP CRS 176°	Rwy Idg 5006 TDZE 474 Apt Elev 474
--	------------------------	---

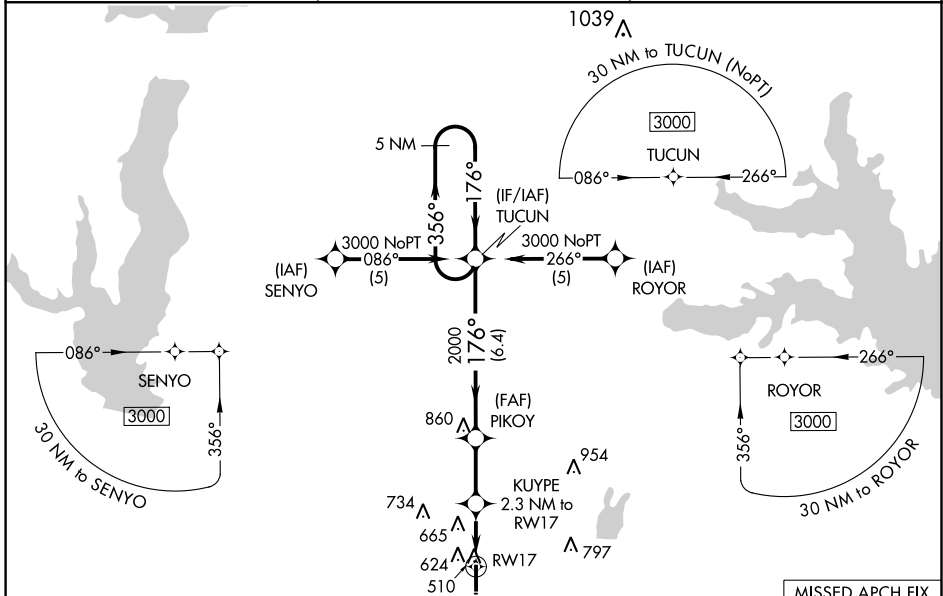
RNAV (GPS) RWY 17

TERRELL MUNI (TRL)

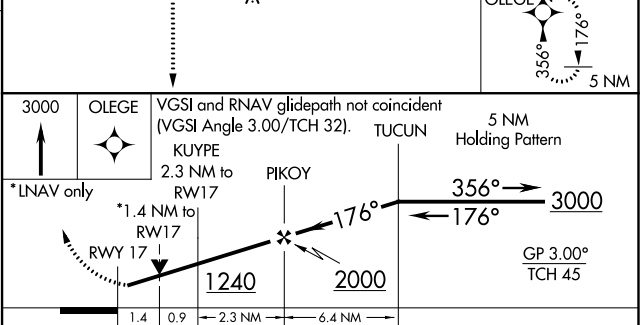
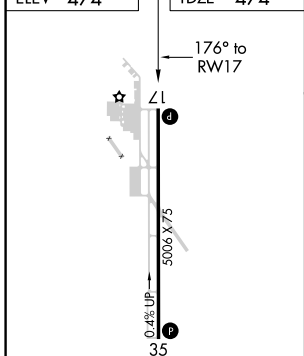
⚠ When local altimeter setting not received, use Dallas Love Fld altimeter setting: increase LPV DA to 829 feet; increase LNAV/VNAV DA to 1086 feet and all visibilities $\frac{3}{8}$ SM; increase all MDAs 80 feet and visibility Cat C $\frac{1}{4}$ SM. Baro-VNAV and VDP NA when using Dallas Love Fld altimeter setting. For uncompensated Baro-VNAV systems, LNAV/VNAV NA below -7°C (20°F) or above 54°C (130°F). DME/DME RNP-0.3 NA. Helicopter visibility reduction below $\frac{3}{8}$ SM NA.

MISSED APPROACH: Climb to 3000 direct OLEGE and hold.

ASOS 119.275	FORT WORTH CENTER 132.025 360.75	UNICOM 122.8 (CTAF) 0
------------------------	--	---------------------------------



ELEV 474	TDZE 474
-----------------	-----------------



CATEGORY	A	B	C	D
LPV DA	756-1 282 (300-1)			NA
LNAV/VNAV DA	1013-1 $\frac{7}{8}$ 539 (600-1 $\frac{3}{8}$)			NA
LNAV MDA	960-1 486 (500-1)		960-1 $\frac{3}{8}$ 486 (500-1 $\frac{3}{8}$)	NA
CIRCLING	1000-1 526 (600-1)	1020-1 546 (600-1)	1100-1 $\frac{3}{4}$ 626 (700-1 $\frac{3}{4}$)	NA

RLS Rwy 17 **0**
REIL Rws 17 and 35
MIRL Rws 17-35 **0**

SC-2, 09 SEP 2021 to 07 OCT 2021

SC-2, 09 SEP 2021 to 07 OCT 2021