

CAMP MACKALL, NORTH CAROLINA

RNAV (GPS) RWY 12

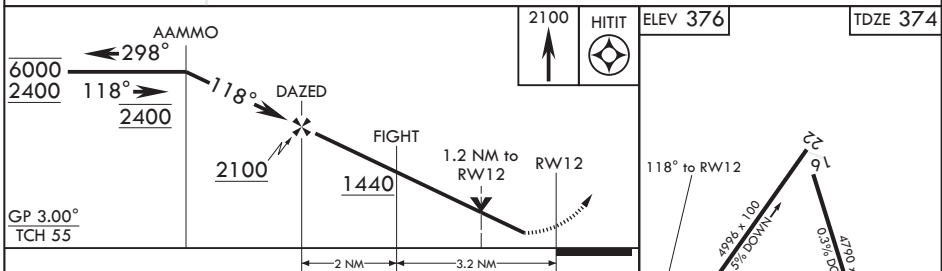
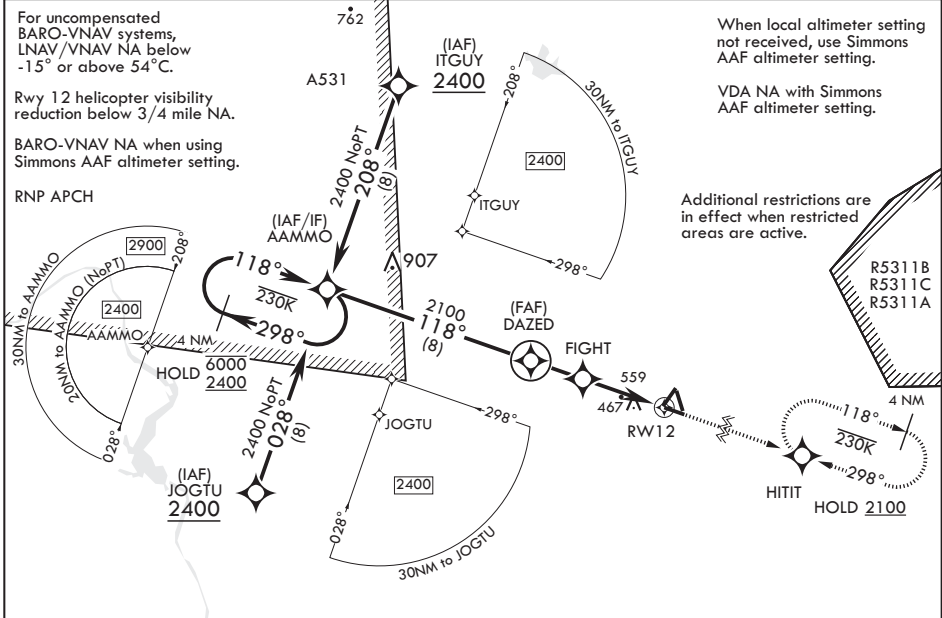
WAAS CH 92382 W12A	APCH CRS 118°	Rwy ldg 4794 TDZE 374 Arprt Elev 376
-------------------------------------	----------------------	---

AL-6315 (USA)

MACKALL AAF (KHFF)

V * When tower closed, increase vis to 1 mile.
** Circling NA to RWYs 4,16,22, and 34.
MISSED APPROACH: Climb to 2100 direct HITIT and hold.

D-ATIS 141.4	FAYETTEVILLE APP CON/DEP CON 127.8 343.725	TOWER★ 121.0 (CTAF) 0 254.4	GND CON 128.35 251.05
------------------------	--	---------------------------------------	---------------------------------



CATEGORY	A	B	C	D
LPV DA*	575-¾	200	(200-¾)	
LNAV/VNAV DA	851-1½	476	(500-1½)	
LNAV MDA	820-1 445 (500-1)	820-1¾ 445 (500-1¾)		
C CIRCLING**	860-1 484 (500-1)	880-1 504 (600-1)	980-1¾ 604 (700-1¾)	1020-2 644 (700-2)
SIMMONS AAF ALTIMETER SETTING MINIMUMS				
LPV DA*	659-7/8	284	(300-7/8)	
LNAV/VNAV DA	935-1½	560	(600-1½)	
LNAV MDA	920-1 545 (600-1)	920-1½ 545 (600-1½)		
C CIRCLING**	960-1 584 (600-1)	1060-2 684 (700-2)	1100-2¼ 724 (800-2¼)	

HIRL Rwy's 4-22, 12-30

CAMP MACKALL, NORTH CAROLINA 35°02'N - 79°30'W MACKALL AAF (KHFF)

Orig 17JUN21 TERPS

RNAV (GPS) RWY 12

SE-2, 09 SEP 2021 to 07 OCT 2021

SE-2, 09 SEP 2021 to 07 OCT 2021