

WAAS CH 97330 W22A	APP CRS 225°	Rwy Idg TDZE Apt Elev	5243 574 578
--	------------------------	-----------------------------	---

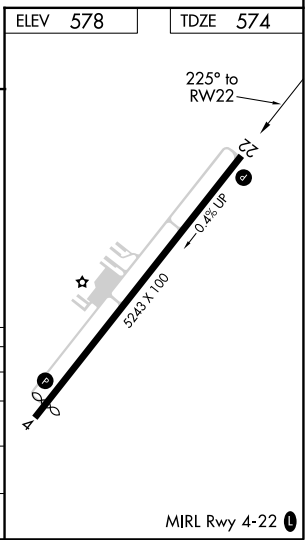
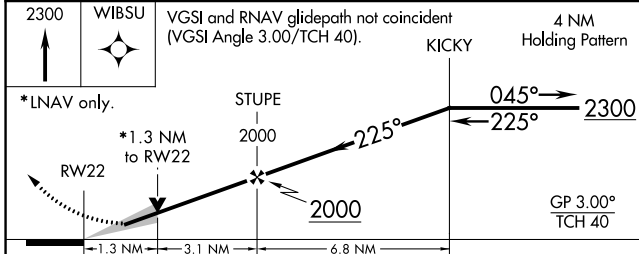
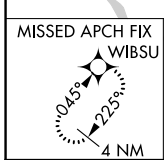
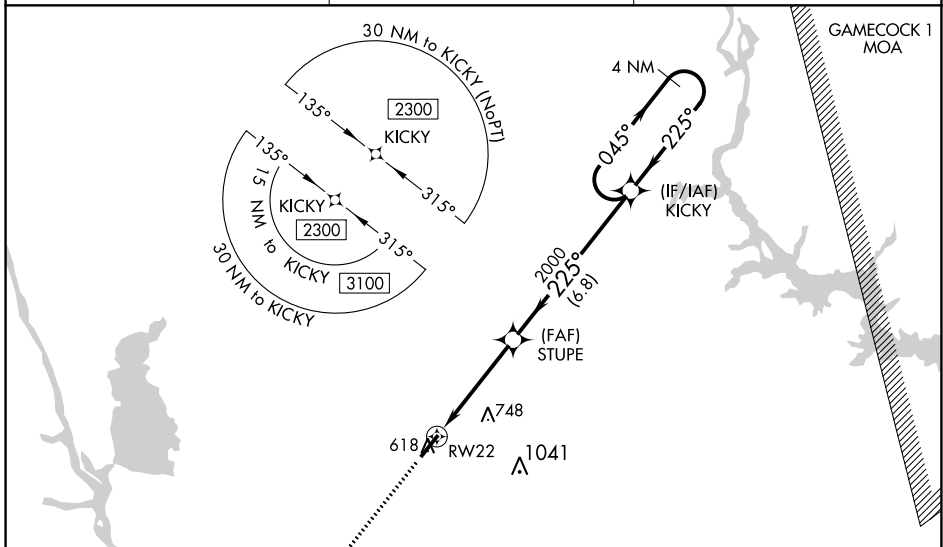
RNAV (GPS) RWY 22

FAIRFIELD COUNTY (FDW)

▼ For uncompensated Baro-VNAV systems, LNAV/VNAV NA below -16°C (4°F) or above 54°C (130°F). DME/DME RNP-0.3 NA.

▲ MISSED APPROACH: Climb to 2300 direct WBSU and hold.

AWOS-3 119.075	COLUMBIA APP CON 133.4 285.6	UNICOM 123.05 (CTAF) 0
--------------------------	--	----------------------------------



CATEGORY	A	B	C	D
LPV DA		824-7/8	250 (300-7/8)	
LNAV/VNAV DA		824-7/8	250 (300-7/8)	
LNAV MDA	1000-1	426 (500-1)	1000-1/4	426 (500-1/4)
C CIRCLING	1000-1 422 (500-1)	1040-1 462 (500-1)	1080-1/2 502 (600-1/2)	1360-2/2 782 (800-2/2)

SE-2, 09 SEP 2021 to 07 OCT 2021

SE-2, 09 SEP 2021 to 07 OCT 2021