

WAAS CH 90424 W22A	APP CRS 220°	Rwy Idg TDZE 35 Apt Elev 35
----------------------------------------	------------------------	-------------------------------------------------

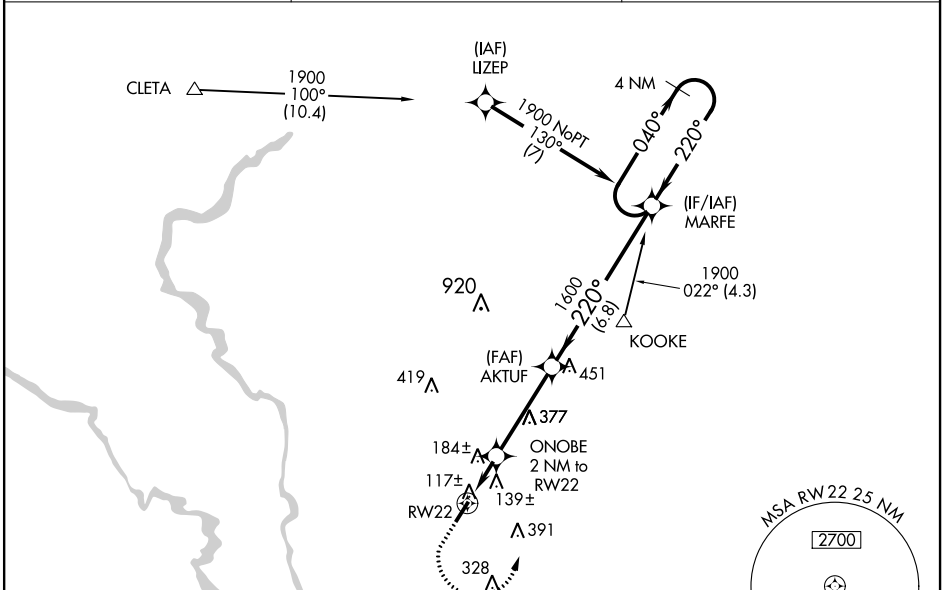
RNAV (GPS) RWY 22

CONWAY-HORRY COUNTY (HYW)

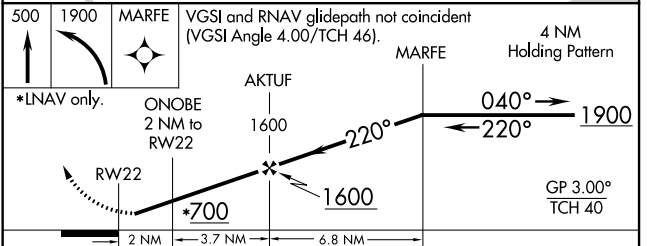
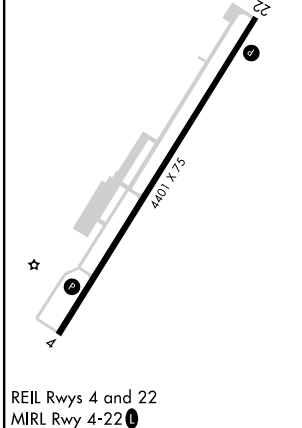
▼ For uncompensated Baro-VNAV systems, LNAV/VNAV NA below -1.5°C (5°F) or above 43°C (109°F). DME/DME RNP-0.3 NA. Helicopter visibility reduction below 1 SM NA. When local altimeter setting not received, use Myrtle Beach altimeter setting and increase all DA 32 feet and all MDA 40 feet; increase LNAV/VNAV all Cats visibility 1/8 mile and LNAV Cats C and D visibility 1/4 mile. Baro-VNAV NA when using Myrtle Beach altimeter setting. When VGSi inop, Straight-in/Circling Rwy 22 procedure NA at night.

MISSED APPROACH: Climb to 500 then climbing left turn to 1900 direct MARFE and hold.

AWOS-3 119.525	MYRTLE BEACH APP CON ★ 127.4 257.95	UNICOM 122.7 (CTAF) 0
--------------------------	-----------------------------------------------	---------------------------------



ELEV 35	TDZE 35
----------------	----------------



CATEGORY	A	B	C	D
LPV DA	285-1 250 (300-1)			
LNAV/VNAV DA	438-1 3/8 403 (500-1 3/8)			
LNAV MDA	440-1	405 (500-1)	440-1 1/8	405 (500-1 1/8)
CIRCLING	520-1	485 (500-1)	520-1 1/2 485 (500-1 1/2)	600-2 565 (600-2)

SE-2, 09 SEP 2021 to 07 OCT 2021

SE-2, 09 SEP 2021 to 07 OCT 2021