

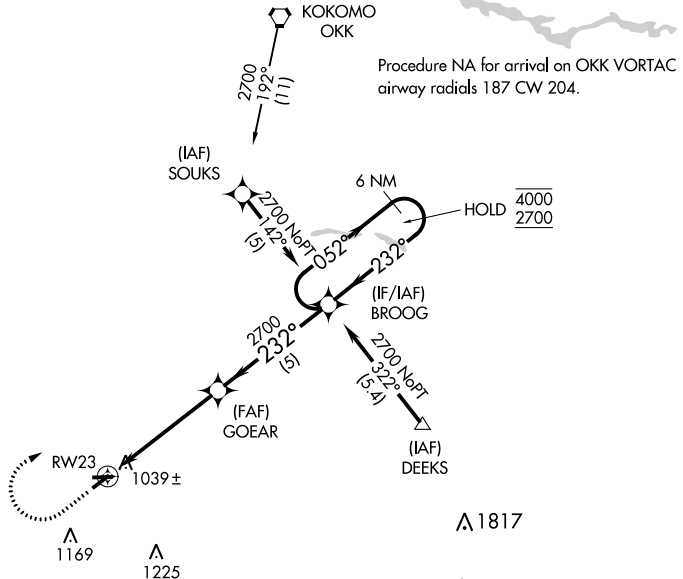
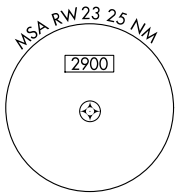
APP CRS	Rwy Idg	3760
232°	TDZE	932
	Apt Elev	936

RNAV (GPS) RWY 23

SHERIDAN (5I4)

RNP APCH.	MISSED APPROACH: Climb to 1800 then climbing right turn to 2700 direct BROOG and hold.
NA Circling NA to Rwy 9 and 27. Procedure NA at night. Rwy 23 helicopter visibility reduction below 1 SM NA. Use Indianapolis Exec altimeter setting.	

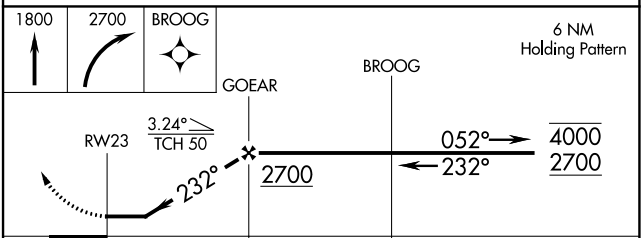
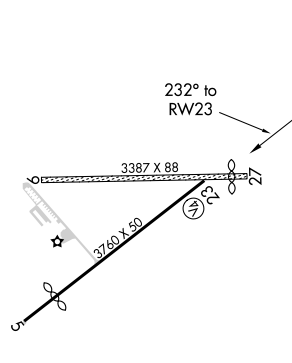
TYQ AWOS-3PT 120.725	INDIANAPOLIS APP CON 124.65 317.8	UNICOM 123.075 (CTAF)
--------------------------------	---	---------------------------------



Procedure NA for arrival on OKK VORTAC airway radials 187 CW 204.

Procedure NA for arrivals at CLANG on V14-192-210 southwest bound.

ELEV 936	TDZE 932
----------	----------



CATEGORY	A	B	C	D
LNAV MDA	1380-1	448 (500-1)	1380-1 $\frac{3}{8}$ 448 (500-1 $\frac{3}{8}$)	NA
C CIRCLING	1460-1 524 (600-1)	1480-1 544 (600-1)	1500-1 $\frac{1}{2}$ 564 (600-1 $\frac{1}{2}$)	NA