

APP CRS <b>214°</b>	Rwy Idg TDZE Apt Elev	<b>2812</b> <b>538</b> <b>538</b>
------------------------	-----------------------------	---

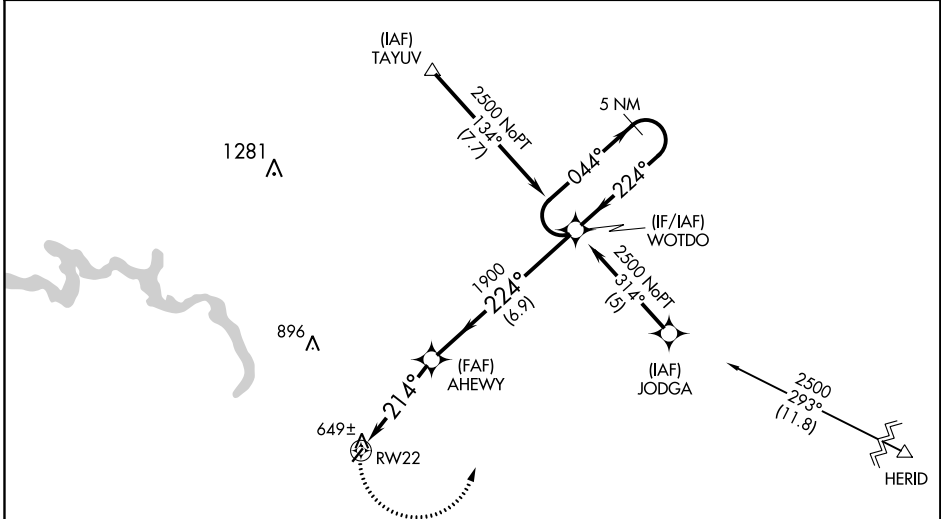
# RNAV (GPS) RWY 22

MALVERN MUNI (M78)

**▼** DME/DME RNP-0.3 NA. Use Hot Springs altimeter setting; when not received, use Bill and Hillary Clinton Ntl/Adams Fld altimeter setting and increase all MDAs 80 feet.  
**▲** NA Helicopter visibility reduction below 1 SM NA. Procedure NA at night.

**MISSED APPROACH:** Climbing left turn to 2500 direct WOTDO and hold.

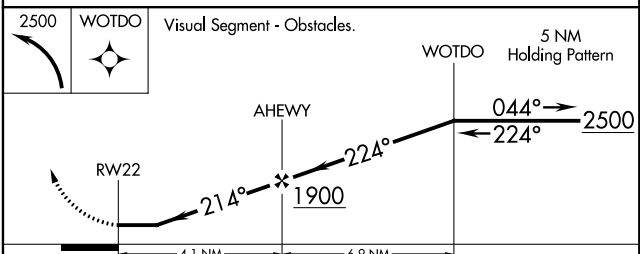
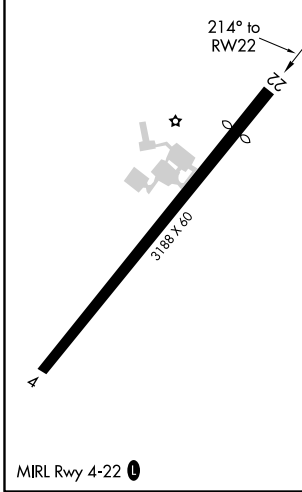
MEMPHIS CENTER <b>128.475 377.15</b>	UNICOM <b>122.8 (CTAF) 0</b>
---	---------------------------------



SC-1, 09 SEP 2021 to 07 OCT 2021

SC-1, 09 SEP 2021 to 07 OCT 2021

ELEV 538	TDZE 538
----------	----------



CATEGORY	A	B	C	D
LNAV MDA	960-1	422 (500-1)	NA	
CIRCLING	1000-1	462 (500-1)	NA	