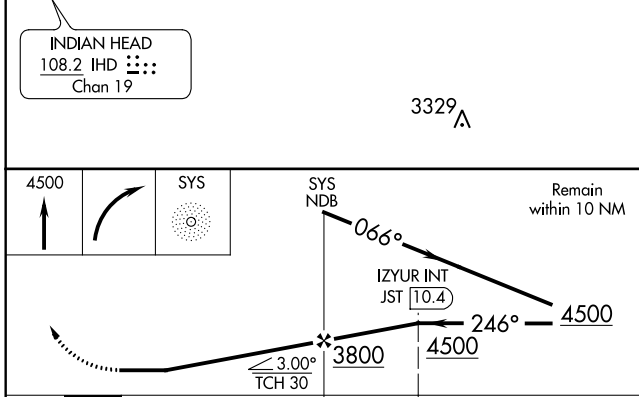
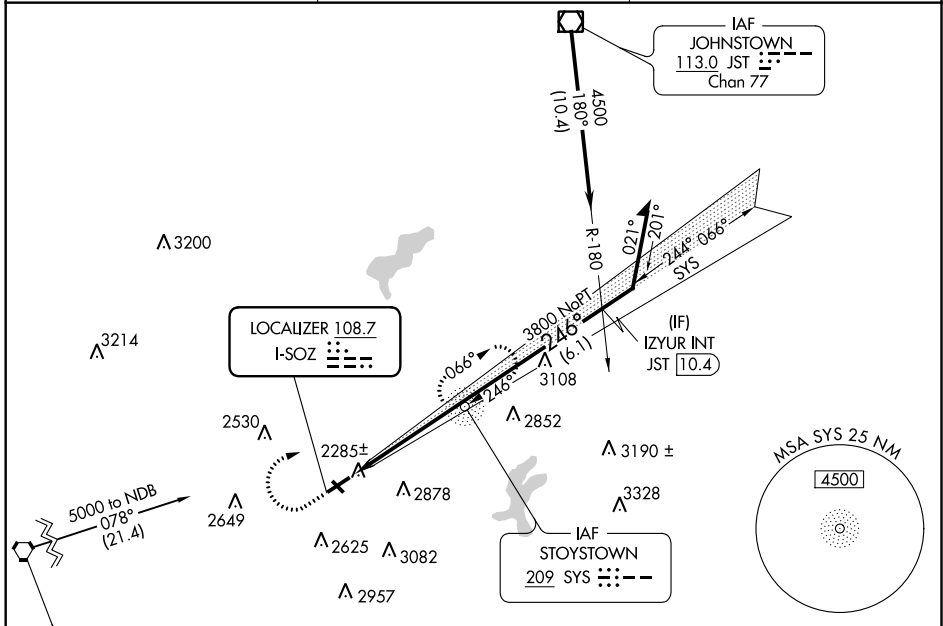


LOC I-SOZ <b>108.7</b>	APP CRS <b>246°</b>	Rwy Idg TDZE Apt Elev	<b>5002</b> <b>2240</b> <b>2275</b>
---------------------------	------------------------	-----------------------------	---

# LOC RWY 25

SOMERSET COUNTY (2G9)

ADF required.		MISSED APPROACH: Climb to 4500 then right turn direct SYS NDB and hold.
<p>▼ Procedure NA at night. Rwy 25 helicopter visibility reduction below 1 SM NA.</p> <p>▲ Circling NA to Rwy 14 and 32.</p>		
AWOS-3P <b>133.8</b>	JOHNSTOWN APP CON ★ <b>121.2 299.2</b>	UNICOM <b>122.8 (CTAF) 0</b>



ELEV 2275	TDZE 2240
-----------	-----------

MIRL Rwy 7-25  
REIL Rwy 7 and 25 0

FAF to MAP 4.9 NM

Knots	60	90	120	150	180
Min:Sec	4:54	3:16	2:27	1:58	1:38

CATEGORY	A	B	C	D
S-25	2700-1	460 (500-1)	2700-1 $\frac{3}{8}$ 460 (500-1 $\frac{3}{8}$ )	2700-1 $\frac{1}{2}$ 460 (500-1 $\frac{1}{2}$ )
<b>C</b> CIRCLING	2820-1 545 (600-1)	2920-1 645 (700-1)	3520-3	1245 (1300-3)

NE-4, 09 SEP 2021 to 07 OCT 2021

NE-4, 09 SEP 2021 to 07 OCT 2021