

MHITO ONE DEPARTURE (RNAV)

SE-3, 09 SEP 2021 to 07 OCT 2021

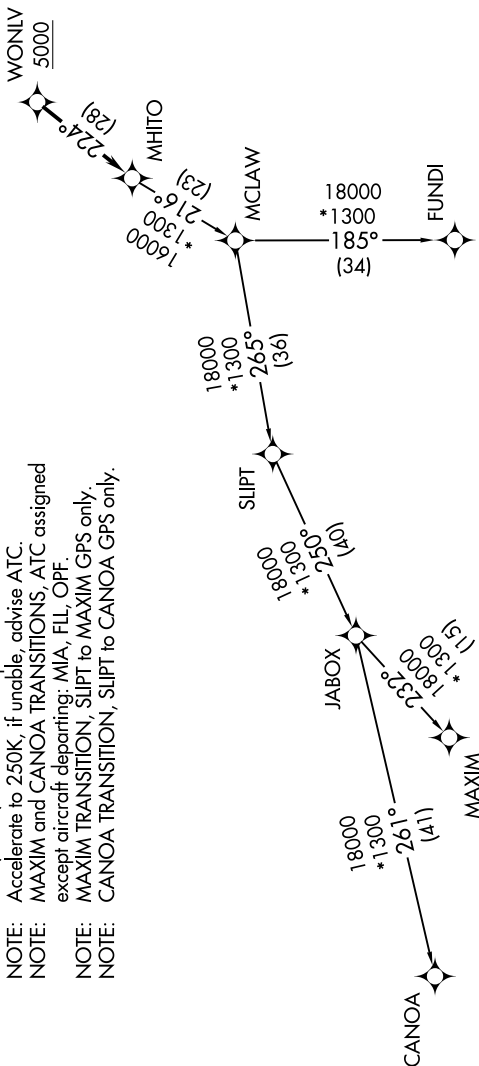
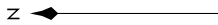
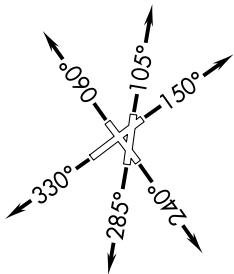
TOP ALTITUDE: ASSIGNED BY ATC

ATIS 120.55
GND CON 121.9
POMPANO BEACH TOWER * 125.4 (CTAF)
MIAMI DEP CON 126.05 251.1

TAKEOFF MINIMUMS

Rwys 6, 24, 28, 33: Standard.
Rwys 10, 15: Standard with minimum climb of 500' per NM to 520.

- NOTE: RNAV 1.
- NOTE: RADAR required.
- NOTE: Jet aircraft only.
- NOTE: DME/DME/IRU or GPS required.
- NOTE: Accelerate to 250K, if unable, advise ATC.
- NOTE: MAXIM and CANOA TRANSITIONS, ATC assigned except aircraft departing: MIA, FLI, OPF.
- NOTE: MAXIM TRANSITION, SLIPT to MAXIM GPS only.
- NOTE: CANOA TRANSITION, SLIPT to CANOA GPS only.



(NARRATIVE ON FOLLOWING PAGE)

NOTE: Chart not to scale.

SE-3, 09 SEP 2021 to 07 OCT 2021