

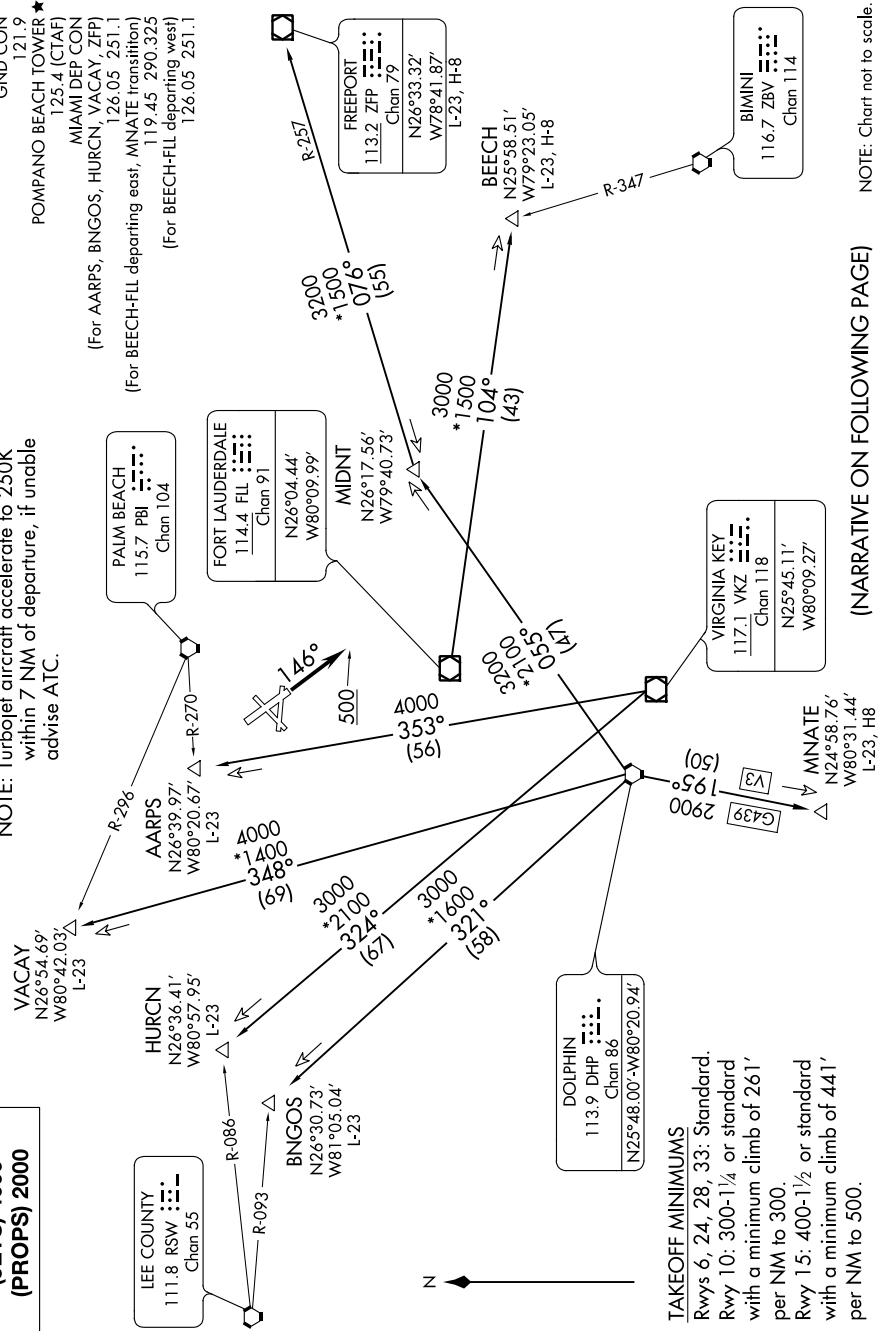
FORT LAUDERDALE EIGHT DEPARTURE

SE-3, 09 SEP 2021 to 07 OCT 2021

TOP ALTITUDE:
(JETS) 4000
(PROPS) 2000

NOTE: RADAR and DME required.
NOTE: Turbojet aircraft accelerate to 250K within 7 NM of departure, if unable advise ATC.

ATIS 120.55
GND CON 121.9
POMPANO BEACH TOWER ★ 125.4 (CTAF)
MIAMI DEP CON 126.05 251.1
(For AARPS, BNGOS, HURCN, VACAY, ZFP)
(For BEECH-FLL departing east, MNATE transition)
(For BEECH-FLL departing west) 119.45 290.325
126.05 251.1



TAKEOFF MINIMUMS
Rwys 6, 24, 28, 33: Standard.
Rwy 10: 300-1/4 or standard with a minimum climb of 261' per NM to 300.
Rwy 15: 400-1/2 or standard with a minimum climb of 441' per NM to 500.

NOTE: Chart not to scale.

(NARRATIVE ON FOLLOWING PAGE)

SE-3, 09 SEP 2021 to 07 OCT 2021

FORT LAUDERDALE EIGHT DEPARTURE