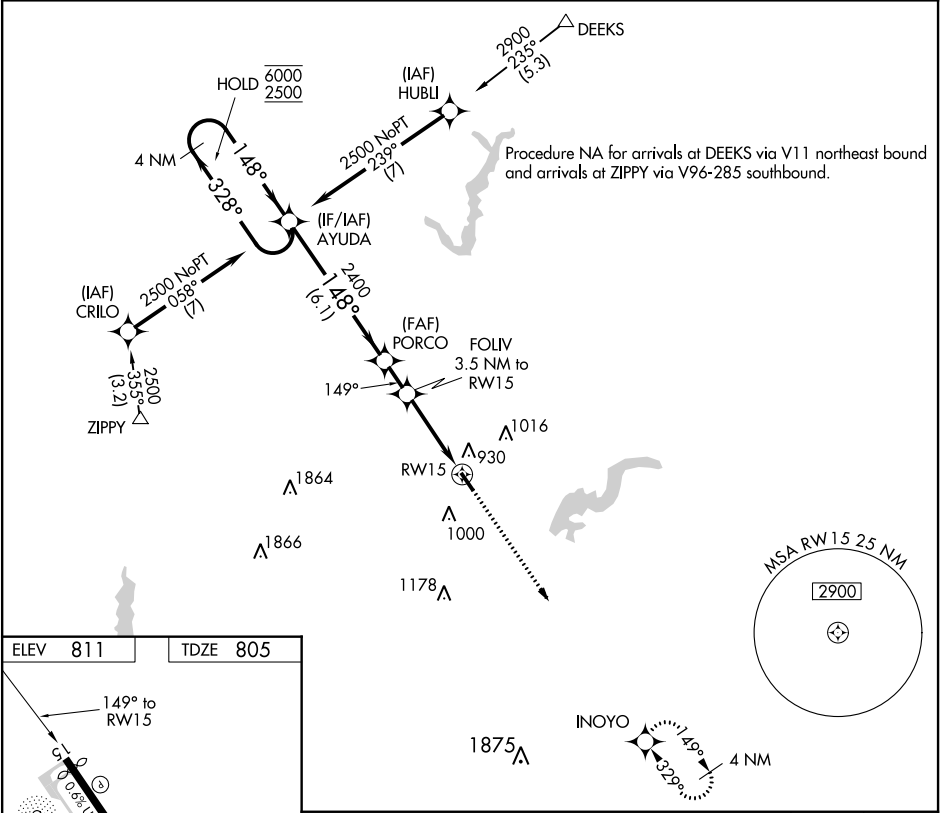


APP CRS	Rwy Idg	3848
149°	TDZE	805
	Apt Elev	811

RNAV (GPS) RWY 15

INDIANAPOLIS METROPOLITAN (UMP)

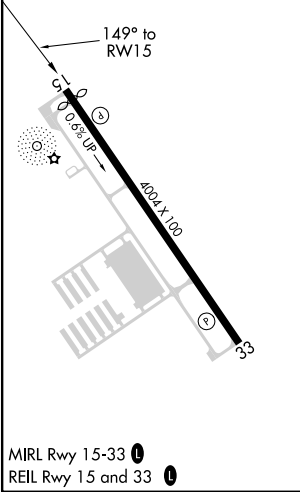
RNP APCH.			MISSED APPROACH: Climb to 2900 direct INOYO and hold.
<p>▼ Helicopter visibility reduction below ¾ SM NA. VDP NA when using Indianapolis Intl altimeter setting. When local altimeter setting not received, use Indianapolis Intl altimeter setting and increase all MDA 60 feet and LNAV Cat C visibility ¼ SM.</p> <p>▲ NA</p>			
AWOS-3 119.375	INDIANAPOLIS APP CON 127.15 317.8	CLNC DEL 121.625	UNICOM 123.0 (CTAF) 0



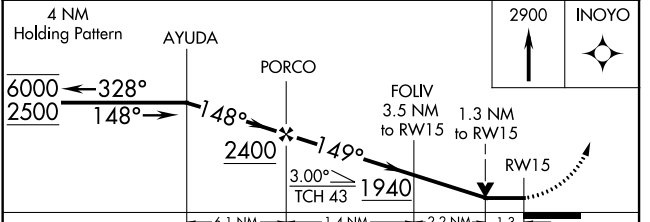
EC-2, 09 SEP 2021 to 07 OCT 2021

EC-2, 09 SEP 2021 to 07 OCT 2021

ELEV	811	TDZE	805
------	------------	------	------------



MIRL Rwy 15-33 **0**
REIL Rwy 15 and 33 **0**



CATEGORY	A	B	C	D
LNAV MDA	1240-1	435 (500-1)	1240-1¼ 435 (500-1¼)	NA
C CIRCLING	1320-1 509 (600-1)	1340-1 529 (600-1)	1340-1½ 529 (600-1½)	NA