

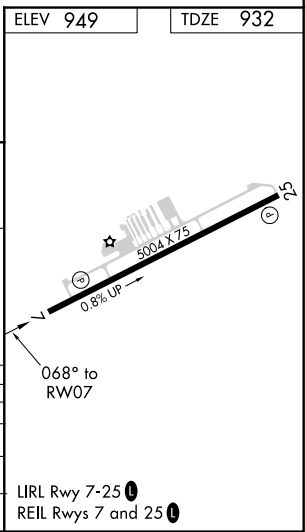
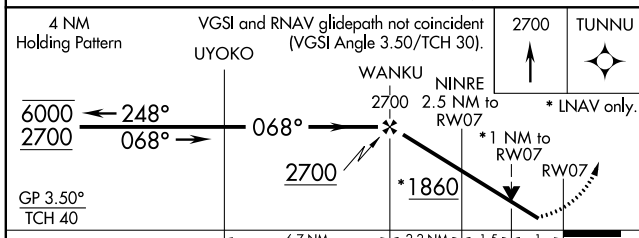
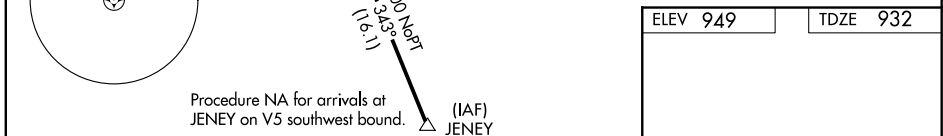
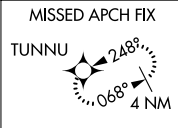
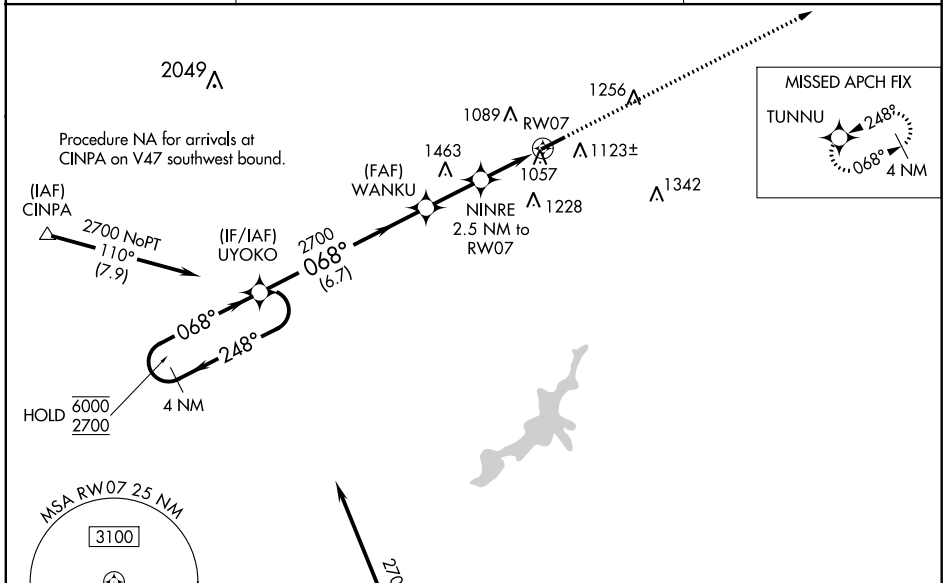
WAAS CH 97702 W07A	APP CRS 068°	Rwy Idg 5004 TDZE 932 Apt Elev 949
--	------------------------	---

RNAV (GPS) RWY 7

GREENE COUNTY-LEWIS A JACKSON RGNL (I19)

RNP APCH.	When local altimeter setting not received, use Dayton-Wright Brothers altimeter setting: increase LPV DA to 1235 feet; increase LNAV/VNAV DA to 1268 feet; increase all MDA 40 feet and LNAV visibility Cat C 1/8 SM. Rwy 7 helicopter visibility reduction below 3/4 NM DA. VDP and Baro-VNAV NA when using Dayton-Wright Brothers altimeter setting. For uncompensated Baro-VNAV systems, LNAV/VNAV NA below -16°C or above 54°C.	MISSED APPROACH: Climb to 2700 direct TUNNU and hold.
-----------	---	--

AWOS-3 118.525	COLUMBUS APP CON 118.85 269.275	UNICOM 122.7 (CTAF) 0
--------------------------	---	---------------------------------



CATEGORY	A	B	C	D
LPV DA	1205-1	273 (300-1)		NA
LNAV/VNAV DA	1238-1	306 (300-1)		NA
LNAV MDA	1320-1	388 (400-1)	1320-1/8 388 (400-1/8)	NA
CIRCLING	1480-1	531 (600-1)	1560-1 3/4 611 (700-1 3/4)	NA

EC-2, 09 SEP 2021 to 07 OCT 2021

EC-2, 09 SEP 2021 to 07 OCT 2021