

WAAS CH <b>56602</b> <b>W25A</b>	APP CRS <b>248°</b>	Rwy Idg <b>5004</b> TDZE <b>949</b> Apt Elev <b>949</b>
--	------------------------	---

# RNAV (GPS) RWY 25

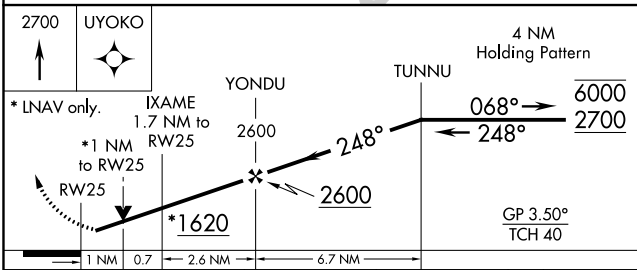
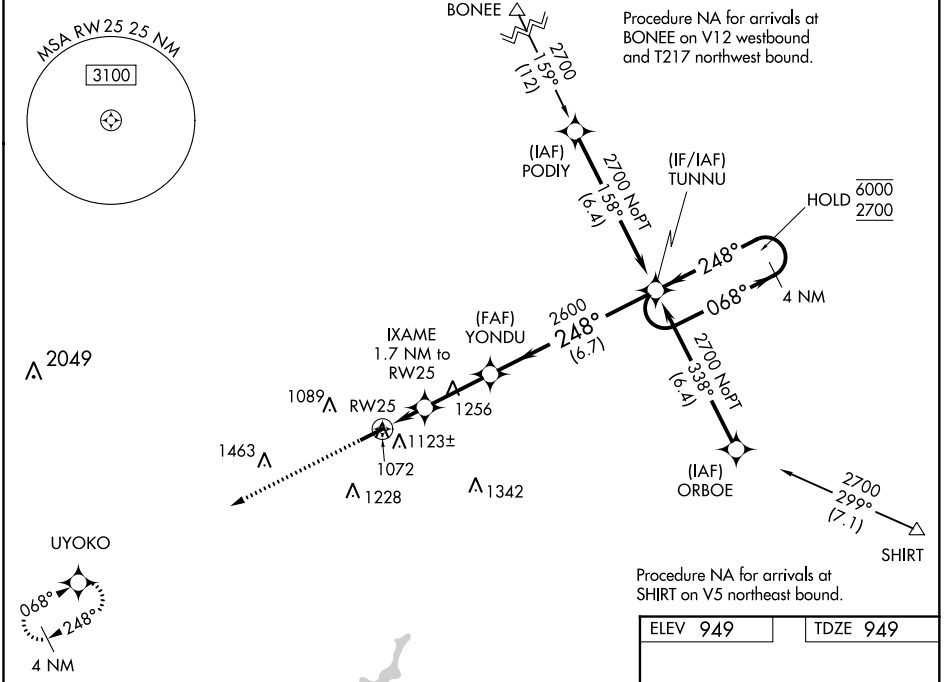
GREENE COUNTY-LEWIS A JACKSON RGNL (I19)

**RNP APCH.**

**NA** For uncompensated Baro-VNAV systems, LNAV/VNAV NA below -16°C or above 54°C.  
 Rwy 25 helicopter visibility reduction below 3/4 SM NA. VDP and Baro-VNAV NA when using Dayton-Wright Brothers altimeter setting. When local altimeter setting not received, use Dayton-Wright Brothers altimeter setting: increase LPV DA to 1249 feet; increase LNAV/VNAV DA to 1252 feet; increase all MDA 40 feet and LNAV visibility Cat C 1/8 SM.

**MISSED APPROACH:**  
 Climb to 2700 direct UYOKO and hold.

AWOS-3 <b>118.525</b>	COLUMBUS APP CON <b>118.85 269.275</b>	UNICOM <b>122.7 (CTAF) 0</b>
--------------------------	---	---------------------------------



ELEV 949	TDZE 949
LIRL Rwy 7-25 0 REIL Rwy 7 and 25 0	

CATEGORY	A	B	C	D
LPV DA	1219-1	270 (300-1)		NA
LNAV/VNAV DA	1222-1	273 (300-1)		NA
LNAV MDA	1340-1	391 (400-1)	1340-1 1/8 391 (400-1 1/8)	NA
<b>CIRCLING</b>	1480-1	531 (600-1)	1560-1 3/4 611 (700-1 3/4)	NA

EC-2, 09 SEP 2021 to 07 OCT 2021

EC-2, 09 SEP 2021 to 07 OCT 2021