

ATHENS, TEXAS

AL-5865 (FAA)

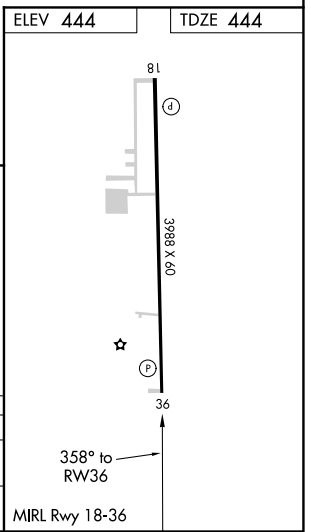
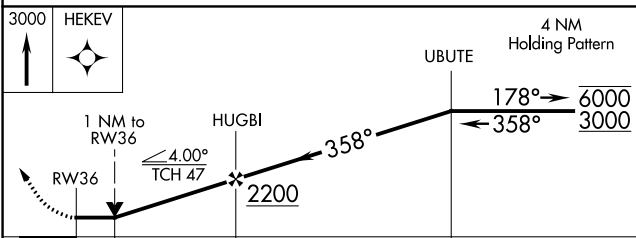
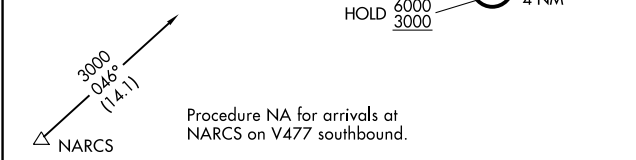
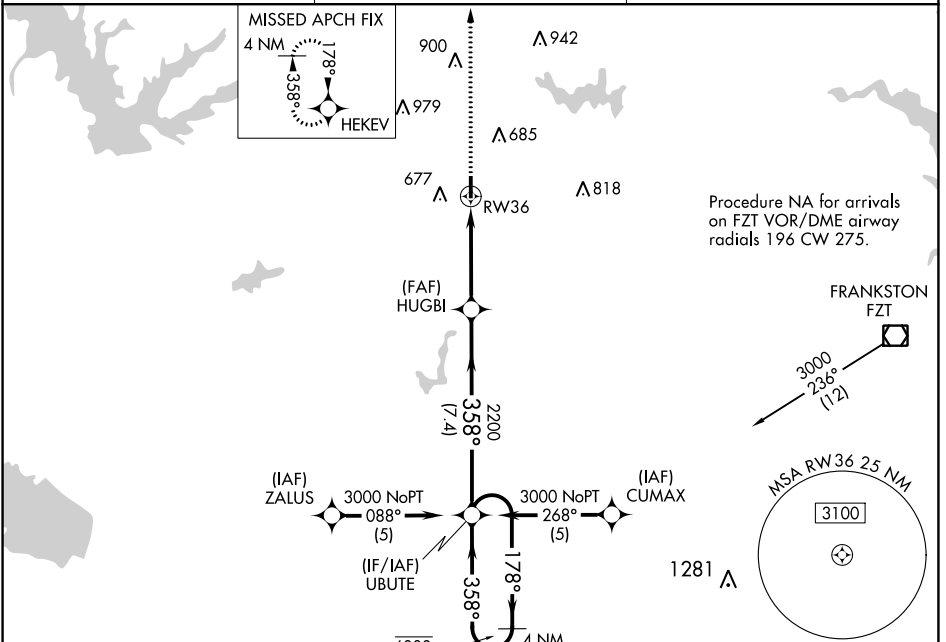
19283

APP CRS	Rwy Idg	<b>3988</b>
<b>358°</b>	TDZE	<b>444</b>
	Apt Elev	<b>444</b>

# RNAV (GPS) RWY 36

ATHENS MUNI (F44)

RNP APCH.		MISSED APPROACH: Climb to 3000 direct HEKEV and hold.
<p>Rwy 36 helicopter visibility reduction below 3/4 SM NA. When local altimeter setting not received, procedure NA.</p>		
AWOS-3PT <b>119.6</b>	FORT WORTH CENTER <b>135.25 265.1</b>	UNICOM <b>123.0 (CTAF)</b>



CATEGORY	A	B	C	D
LNVA MDA	900-1	456 (500-1)		NA
CIRCLING	980-1 536 (600-1)	1000-1 556 (600-1)		NA

ATHENS, TEXAS  
Amdt 1 10OCT19

32°10'N-95°50'W

# RNAV (GPS) RWY 36

SC-2, 09 SEP 2021 to 07 OCT 2021

SC-2, 09 SEP 2021 to 07 OCT 2021