

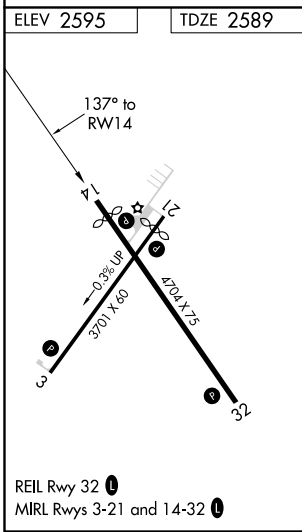
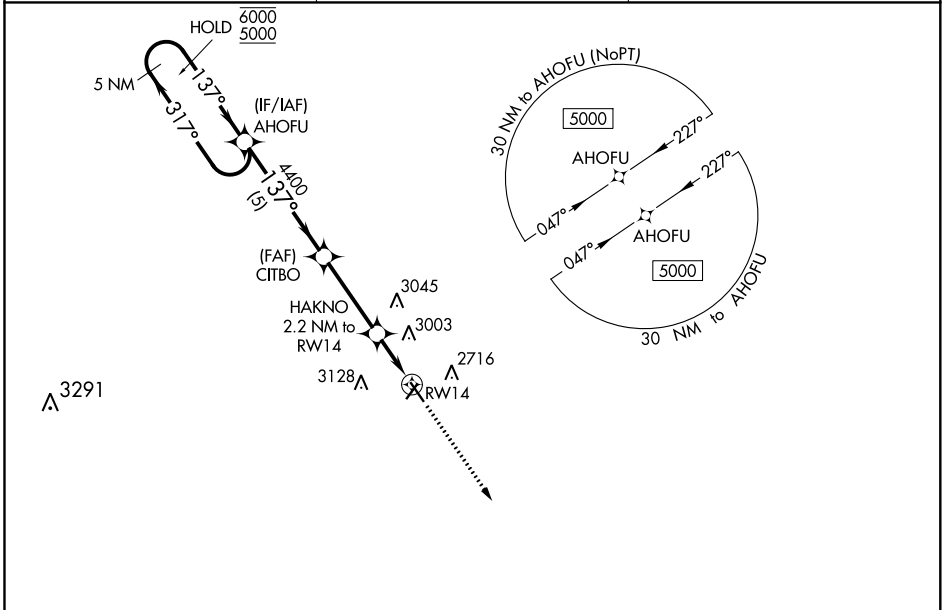
WAAS CH 61037 W14A	APP CRS 137°	Rwy Idg TDZE Apt Elev	4320 2589 2595
--	------------------------	-----------------------------	---

RNAV (GPS) RWY 14

MILLER FIELD (VTN)

RNP APCH.	MISSED APPROACH: Climb to 5000 direct GIYIT and hold.
For uncompensated Baro-VNAV systems, LNAV/VNAV NA below -25°C or above 54°C . Rwy 14 helicopter visibility reduction below ¾ SM NA.	

ASOS 118.075	DENVER CENTER 127.95 338.2	UNICOM 122.8 (CTAF) 0
------------------------	--------------------------------------	---------------------------------



ELEV 2595	TDZE 2589	GIYIT ∇ 138° ∇ 318° 5 NM				
5 NM Holding Pattern 6000 ← 317° 5000 → 137°		AHOFU	CITBO	HAKNO	5000	GIYIT
GP 3.00° TCH 40		4400	4400	2.2 NM to RW14	↑	∇
		5 NM	3.4 NM	0.5	1.7 NM	*LNAV only
REIL Rwy 32 0	MIRL Rwy 3-21 and 14-32 0					
CATEGORY	A	B	C	D		
LPV DA	2861-1	272 (300-1)	NA			
LNAV/VNAV DA	3239-2¼	650 (700-2¼)	NA			
LNAV MDA	3160-1	571 (600-1)	NA			
<input checked="" type="checkbox"/> CIRCLING	3160-1 565 (600-1)	3560-1½ 965 (1000-1½)	NA			

NC-2, 09 SEP 2021 to 07 OCT 2021

NC-2, 09 SEP 2021 to 07 OCT 2021