

WAAS CH <b>49017</b> <b>W03A</b>	APP CRS <b>029°</b>	Rwy Idg <b>4400</b> TDZE <b>410</b> Apt Elev <b>416</b>
--	------------------------	---

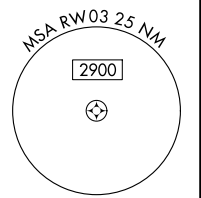
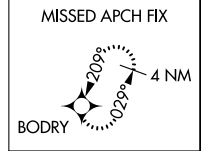
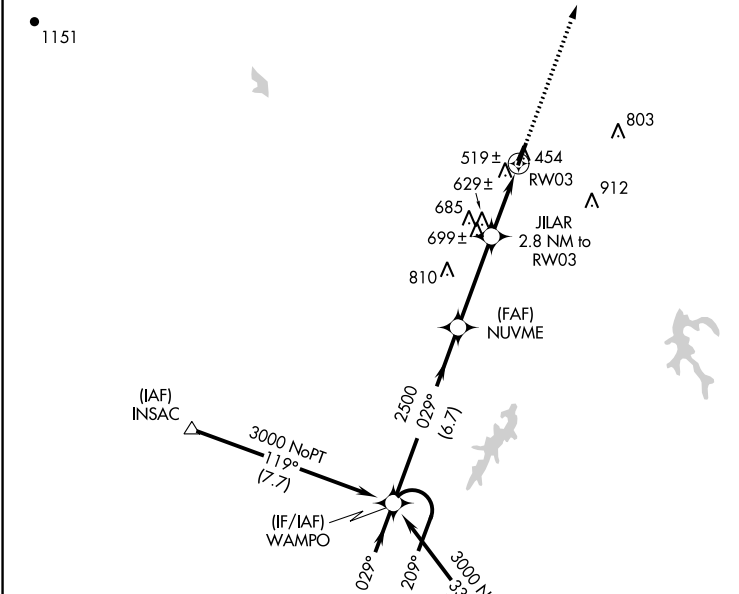
# RNAV (GPS) RWY 3

FARMVILLE RGNL (FVX)

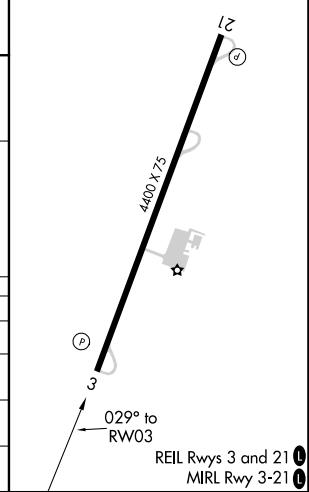
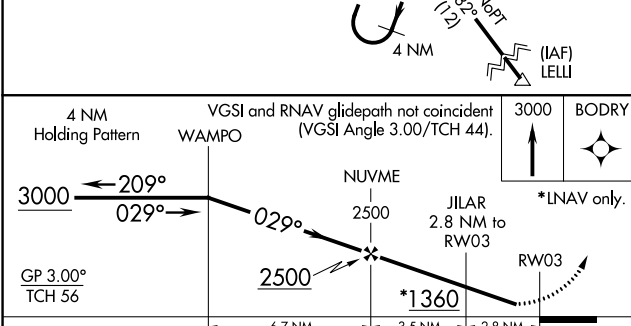
**▼** Baro-VNAV NA when using Lynchburg altimeter setting. For uncompensated Baro-VNAV systems, LNAV/VNAV NA below -15°C (5°F) or above 54°C (130°F). Straight-in/Circling Rwy 3 procedure NA at night. DME/DME RNP-0.3 NA. When local altimeter setting not received, use Lynchburg altimeter setting and increase all DA 158 feet and all MDA 160 feet. Increase LPV and LNAV/VNAV visibility ½ mile all Cats; LNAV Cat C visibility ¾ mile and Circling Cat C visibility ¾ mile. Helicopter visibility reduction below 1 SM NA.

**MISSED APPROACH:**  
Climb to 3000 direct BODRY and hold.

AWOS-3 <b>132.725</b>	ROANOKE APP CON <b>135.0 254,325</b>	GCO <b>135.075</b>	UNICOM <b>122.8 (CTAF) 0</b>
--------------------------	---	-----------------------	---------------------------------



ELEV 416	TDZE 410
----------	----------



CATEGORY	A	B	C	D
LPV DA	720-1 310 (400-1)			NA
LNAV/VNAV DA	812-1 ¾ 402 (400-1 ¾)			NA
LNAV MDA	880-1 470 (500-1)		880-1 ¾ 470 (500-1 ¾)	NA
CIRCLING	900-1 484 (500-1)		1000-1 ½ 584 (600-1 ½)	NA

NE-3, 09 SEP 2021 to 07 OCT 2021

NE-3, 09 SEP 2021 to 07 OCT 2021