

WAAS CH 70517 W21A	APP CRS 209°	Rwy Idg 4400 TDZE 416 Apt Elev 416
----------------------------------------	------------------------	---------------------------------------------------------------

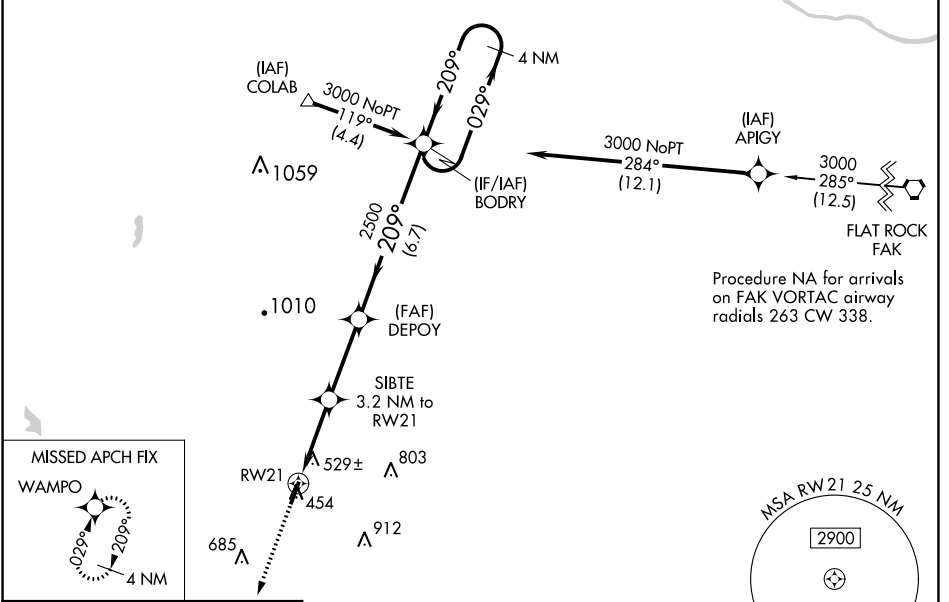
RNAV (GPS) RWY 21

FARMVILLE RGNL (FVX)

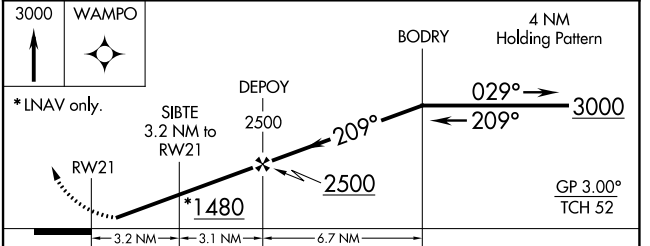
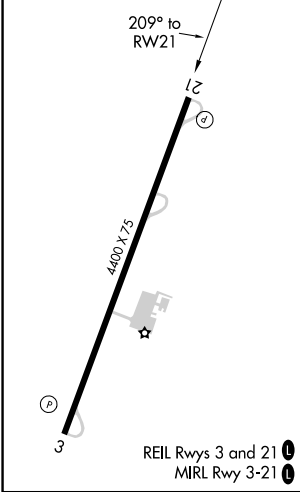
⚠ Baro-VNAV NA when using Lynchburg altimeter setting. For uncompensated Baro-VNAV systems, LNAV/VNAV NA below -1.5°C (5°F) or above 54°C (130°F). DME/DME RNP-0.3 NA. When local altimeter setting not received, use Lynchburg altimeter setting and increase all DA 158 feet and all MDA 160 feet. Increase LPV all Cats ½ mile; increase LNAV/VNAV visibility all Cats and Circling Cat C visibility ⅔ mile, increase LNAV Cat C visibility ⅓ mile. Helicopter visibility reduction below 1 SM NA.

⚠ MISSED APPROACH: Climb to 3000 direct WAMPO and hold.

AWOS-3 132.725	ROANOKE APP CON 135.0 254.325	GCO 135.075	UNICOM 122.8 (CTAF) 0
--------------------------	-----------------------------------------	-----------------------	---------------------------------



ELEV 416	TDZE 416
----------	----------



CATEGORY	A	B	C	D
LPV DA	696-1 280 (300-1)			NA
LNAV/VNAV DA	866-1⅝ 450 (500-1⅝)			NA
LNAV MDA	860-1	444 (500-1)	860-1⅝ 444 (500-1⅝)	NA
CIRCLING	900-1	484 (500-1)	1000-1½ 584 (600-1½)	NA

NE-3, 09 SEP 2021 to 07 OCT 2021

NE-3, 09 SEP 2021 to 07 OCT 2021