

| | | | |
|--|------------------------|---|-------------|
| WAAS CH 65901 W04A | APP CRS 037° | Rwy Idg TDZE 863 Apt Elev 869 | 6497 |
|--|------------------------|---|-------------|

RNAV (GPS) RWY 4

LEE C FINE MEML (AIZ)

RNP APCH.

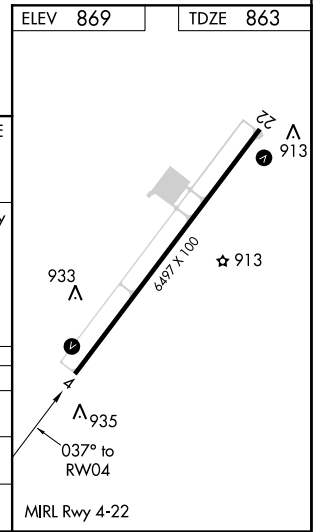
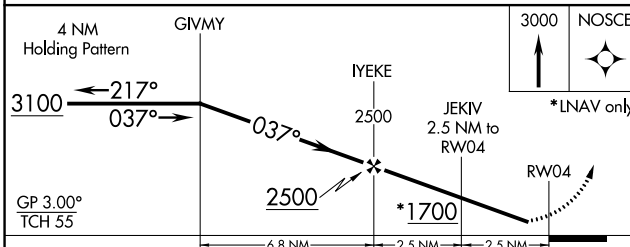
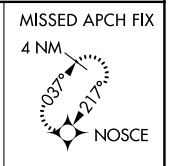
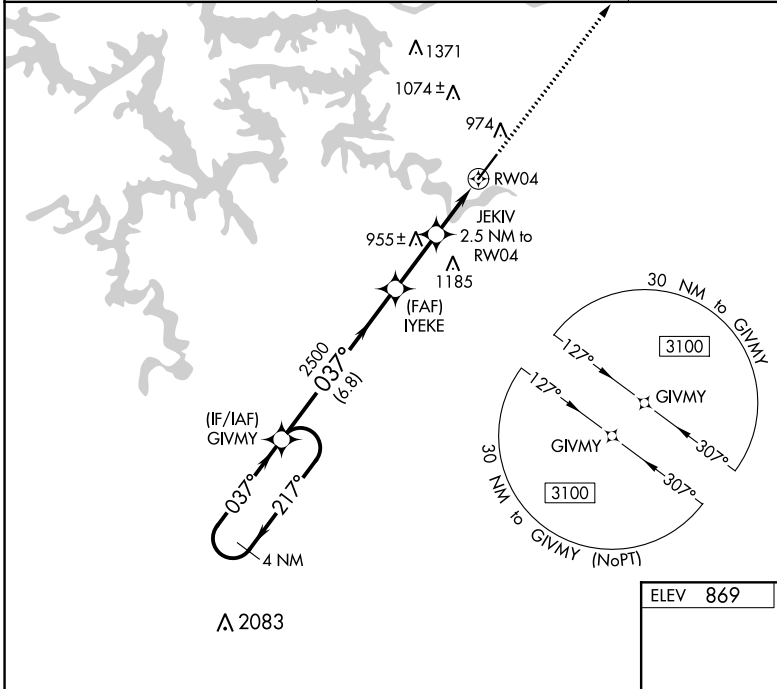
⚠ For uncompensated Baro-VNAV systems, LNAV/VNAV NA below -16°C or above 54°C. Procedure NA at night. Rwy 4 helicopter visibility reduction below 1 SM NA. When local altimeter setting not received, use Camdenton altimeter setting and increase all DA 50 feet, all MDA 60 feet, and LNAV Cat C visibility 1/8 mile. Baro-VNAV NA when using Camdenton altimeter setting.

MISSED APPROACH: Climb to 3000 direct NOSCE and hold.

AWOS-3PT
135.325

MIZU APP CON
124.1 353.925

UNICOM
122.8 (CTAF)



| CATEGORY | A | B | C | D |
|--------------|--------|-------------|---|----|
| LPV DA | 1127-1 | 264 (300-1) | | NA |
| LNAV/VNAV DA | 1113-1 | 250 (300-1) | | NA |
| LNAV MDA | 1220-1 | 357 (400-1) | | NA |

NC-3, 09 SEP 2021 to 07 OCT 2021

NC-3, 09 SEP 2021 to 07 OCT 2021