

APP CRS	Rwy Idg	3110
211°	TDZE	268
	Apt Elev	280

RNAV (GPS) RWY 21

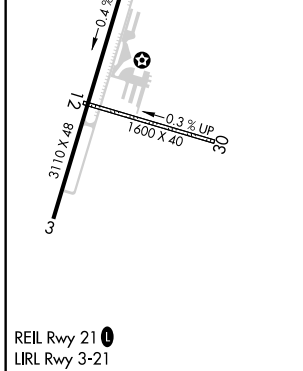
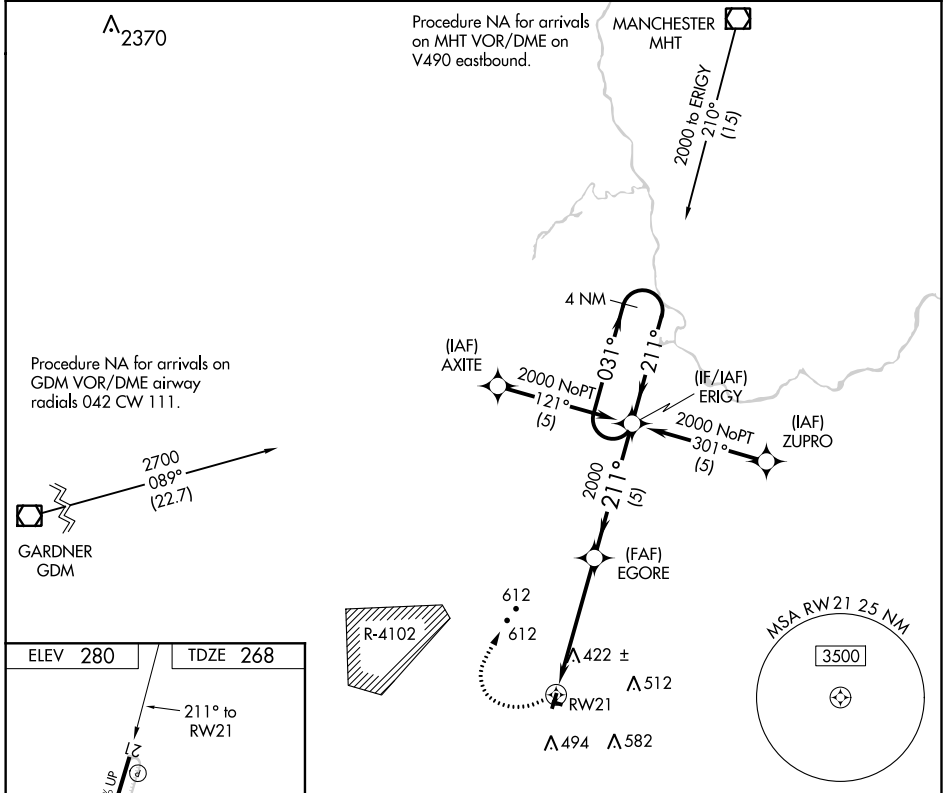
MINUTE MAN AIR FLD (6B6)

RNP APCH - GPS.

▼ Use Bedford altimeter setting; when not received, use Boston altimeter setting and increase all MDAs 60 feet and visibility Cat B ¼ SM. Circling NA to Rwy 12 and 30. Rwy 21 helicopter visibility reduction below ¾ SM NA. Circling Rwy 3 NA at night. VDP NA when using Boston altimeter setting.

▲ NA MISSED APPROACH: Climbing right turn to 2000 direct ERIGY and hold.

BOSTON APP CON	UNICOM
124.4 279.6	122.8 (CTAF)



2000	ERIGY	Visual Segment - Obstacles.	
		EGORE	ERIGY 4 NM Holding Pattern
		2000	211° 031° 2000
		2000	211°
		2 NM	3.1 NM 5 NM
CATEGORY	A	B	C D
LNAV MDA	960-1	692 (700-1)	NA
CIRCLING	960-1	1020-1	NA
	680 (700-1)	740 (800-1)	

NE-1, 09 SEP 2021 to 07 OCT 2021

NE-1, 09 SEP 2021 to 07 OCT 2021