

MELFA, VIRGINIA

AL-5598 (FAA)

19115

|  |                        |   |
|--|------------------------|---|
| WAAS<br>CH <b>42905</b><br><b>W03A</b> | APP CRS<br><b>034°</b> | Rwy Idg <b>5000</b><br>TDZE <b>47</b><br>Apt Elev <b>48</b> |
|--|------------------------|---|

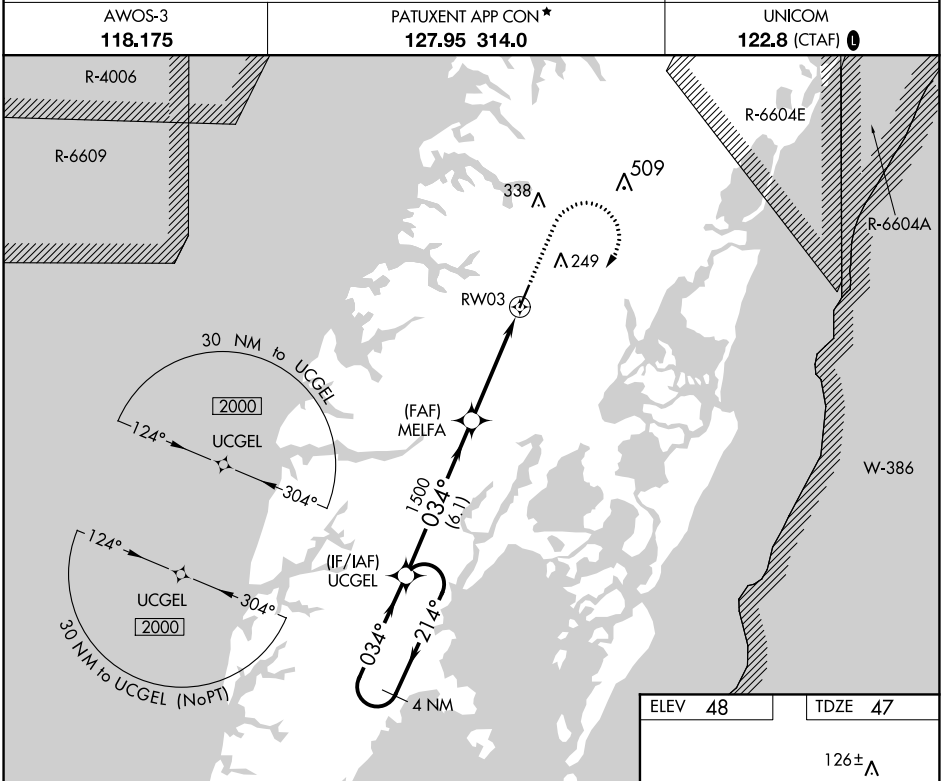
# RNAV (GPS) RWY 3

ACCOMACK COUNTY (MFV)

RNP APCH.

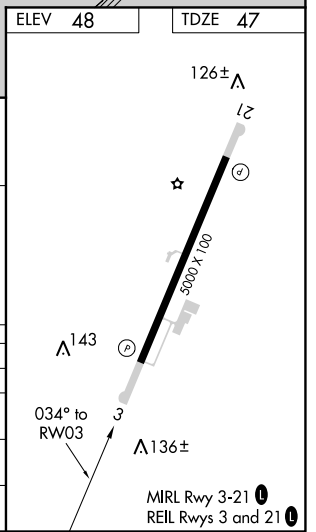
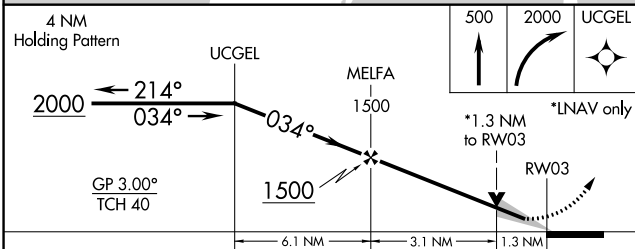
**▼** For uncompensated Baro-VNAV systems, LNAV/VNAV NA below -15°C or above 54°C.

MISSED APPROACH: Climb to 500 then climbing right turn to 2000 direct UCGEL and hold.



NE-3, 09 SEP 2021 to 07 OCT 2021

NE-3, 09 SEP 2021 to 07 OCT 2021



| CATEGORY          | A                    | B                    | C   | D                          |
|-------------------|----------------------|----------------------|---|----------------------------|
| LPV DA            |                      | 297-1                | 250 (300-1)                                       |                            |
| LNAV/VNAV DA      |                      | 349-1                | 302 (400-1)                                       |                            |
| LNAV MDA          | 500-1                | 453 (500-1)          | 500-1 $\frac{3}{4}$                               | 453 (500-1 $\frac{3}{4}$ ) |
| <b>C</b> CIRCLING | 500-1<br>452 (500-1) | 560-1<br>512 (600-1) | 700-1 $\frac{3}{4}$<br>652 (700-1 $\frac{3}{4}$ ) | 700-2<br>652 (700-2)       |

MELFA, VIRGINIA  
Amdt 2A 06DEC18

37°39'N-75°46'W

# ACCOMACK COUNTY (MFV)

## RNAV (GPS) RWY 3