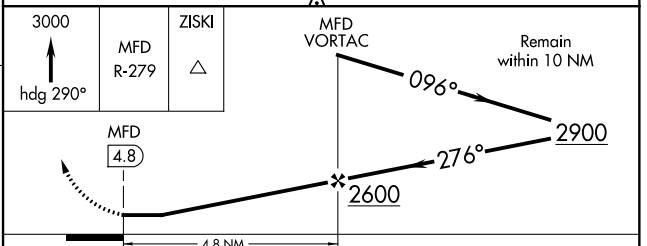
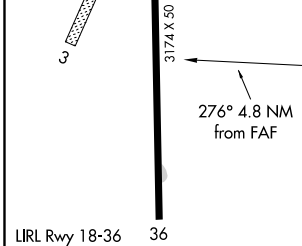
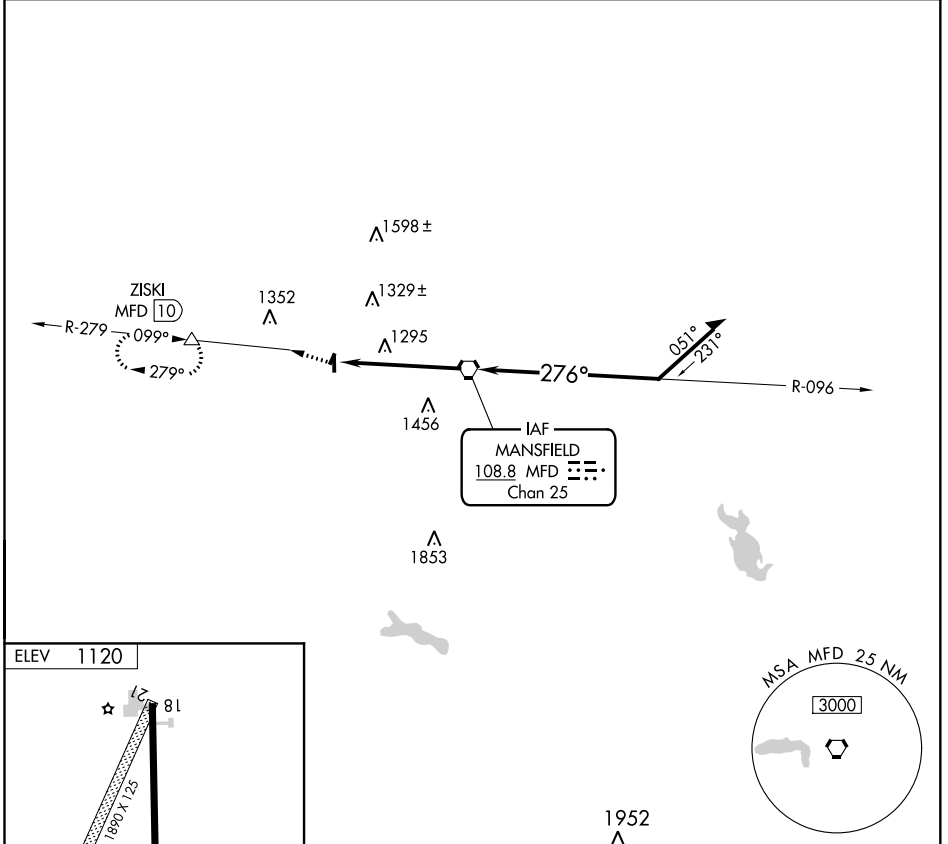


VORTAC MFD 108.8 Chan 25	APP CRS 276°	Rwy Idg TDZE Apt Elev	N/A N/A 1120
---------------------------------------	------------------------	-----------------------------	---

VOR-A
SHELBY COMMUNITY (12G)

DME required. ▼ Use Mansfield altimeter setting. Procedure NA at night. ▲ NA Circling to Rwy 3, 21 NA.	MISSED APPROACH: Climb to 3000 via heading 290° and MFD R-279 to ZISKI Int/MFD 10 DME and hold.
--	---

CLEVELAND APP CON ★ 124.2 360.65	UNICOM 122.8 (CTAF)
--	-------------------------------



FAF to MAP 4.8 NM					
Knots	60	90	120	150	180
Min:Sec	4:48	3:12	2:24	1:55	1:36
CATEGORY	A	B	C	D	
CIRCLING	1640-1	520 (600-1)	1640-1½ 520 (600-1½)	NA	

EC-2, 09 SEP 2021 to 07 OCT 2021

EC-2, 09 SEP 2021 to 07 OCT 2021