

APP CRS	Rwy Idg	<b>4899</b>
<b>083°</b>	TDZE	<b>634</b>
	Apt Elev	<b>634</b>

# RNAV (GPS) RWY 8

GRIFFITH-MERRILLVILLE (Ø5C)

RNP APCH

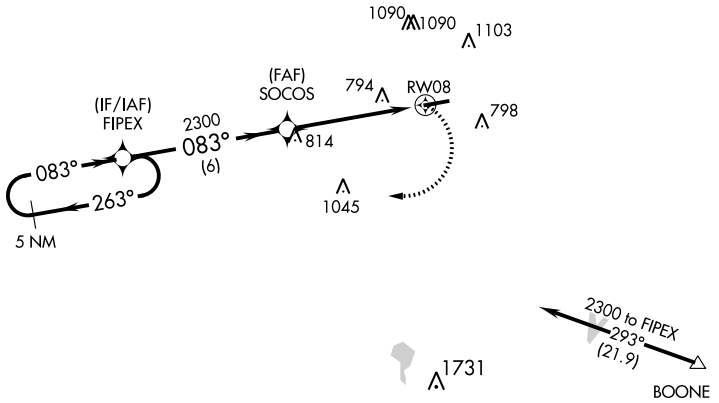
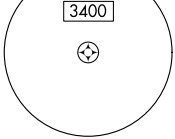
▼ Obtain local altimeter setting on CTAF; when not received use Chicago Midway  
 ▲ NA Init altimeter setting and increase all MDAs 60 feet. Visibility reduction by  
 ▲ NA helicopters NA. Procedure NA at night.

MISSED APPROACH: Climbing right turn to 2300 direct FIPEX and hold.

CHICAGO APP CON  
**133.1 285.6**

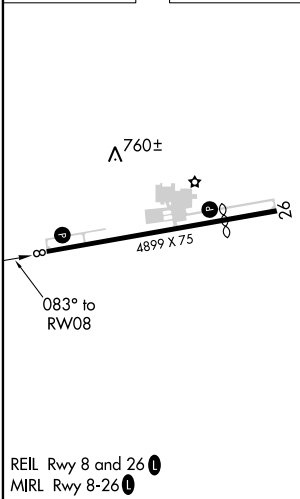
UNICOM  
**123.0 (CTAF) 1**

MSA RW08 25 NM



ELEV 634 TDZE 634

Procedure NA for arrivals at BOONE via V422 southeastbound.



REIL Rwy 8 and 26  
MIRL Rwy 8-26

5 NM Holding Pattern	VGSi and descent angles not coincident (VGSi Angle 3.50/TCH 44).		2300	FIPEX
	FIPEX	SOCOS		
2300	← 263°	→ 083°	2300	083°
			3.04°	TCH 41
		6 NM	5 NM	
CATEGORY	A	B	C	D
LNAV MDA	1080-1	446 (500-1)		NA
<input checked="" type="checkbox"/> CIRCLING	1200-1	566 (600-1)		NA