

WAAS CH 97321 W01A	APP CRS 010°	Rwy Idg TDZE 626 Apt Elev 638
--	------------------------	---

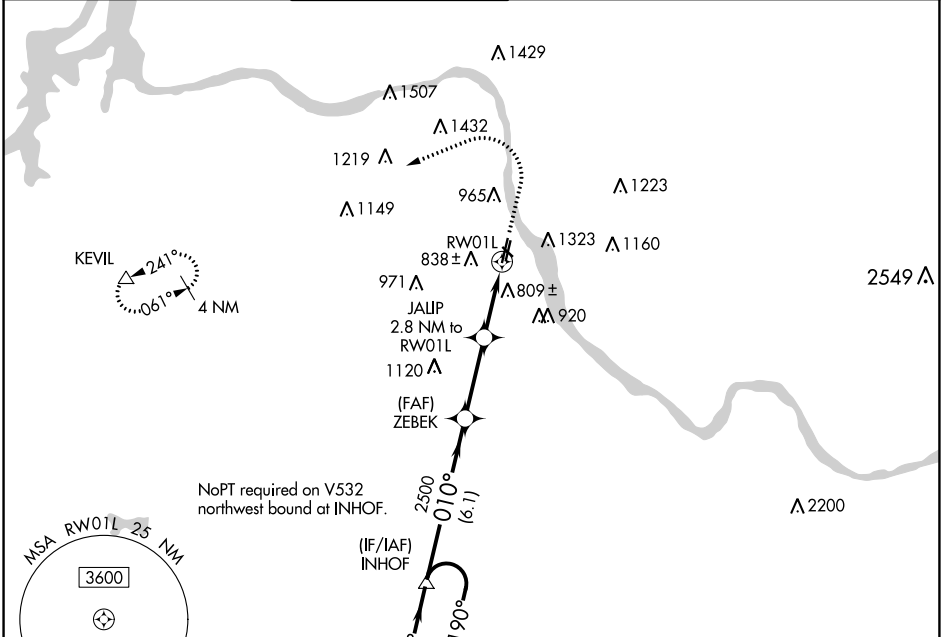
RNAV (GPS) RWY 1L

RICHARD LLOYD JONES JR (RVS)

⚠ For uncompensated Baro-VNAV systems, LNAV/VNAV NA below -12°C (11°F) or above 54°C (130°F). Circling NA northeast of Rwys 31 and 19L. DME/DME RNP-0.3 NA.

⚠ MISSED APPROACH: Climb to 1100 then climbing left turn to 2600 direct KEVIL and hold.

ATIS 126.5	TULSA APP CON 134.7	RIVERSIDE TOWER ★ 120.3 (CTAF) 0	GND CON 121.7	CLNC DEL 124.5	UNICOM 122.95
----------------------	-------------------------------	--	-------------------------	--------------------------	-------------------------



SC-1, 09 SEP 2021 to 07 OCT 2021

SC-1, 09 SEP 2021 to 07 OCT 2021

4 NM Holding Pattern		VGS and RNAV glidepath not coincident (VGS Angle 3.00/TCH 48).		1100	2600	KEVIL
2800 ← 190°		→ 010°		ZEBEK 2500	JALIP 2.8 NM to RWY 1L	*RNAV only.
GP 3.00° TCH 40		2500		*1540	*1.2 NM to RWY 1L	RWY 1L
6.1 NM		3 NM		1.6 NM		1.2 NM
CATEGORY	A	B	C	D		
LPV DA	826- ³ / ₄		200 (200- ³ / ₄)			
LNAV/VNAV DA	1126- ¹ / ₄		500 (500- ¹ / ₄)			
LNAV MDA	1060-1	434 (500-1)	1060- ¹ / ₄	434 (500- ¹ / ₄)		
C CIRCLING	1260-1 622 (700-1)	1280-1 642 (700-1)	1280- ³ / ₄ 642 (700- ³ / ₄)	1380-2 ¹ / ₂ 742 (800-2 ¹ / ₂)		

