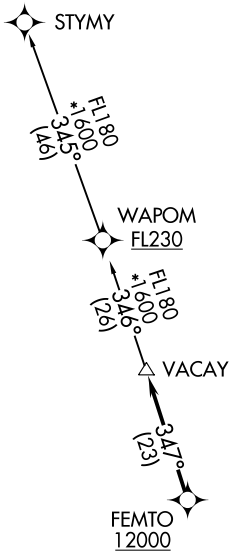


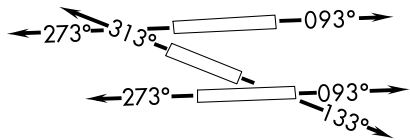
# VACAY ONE DEPARTURE (RNAV)

**TOP ALTITUDE:  
ASSIGNED BY ATC**

ATIS  
124.0  
CLNC DEL  
133.0  
GND CON  
121.7  
TAMIAMI TOWER★  
118.9 (CTAF)  
MIAMI DEP CON  
125.5 354.1



- NOTE: RNAV 1.
- NOTE: RADAR required.
- NOTE: Jet aircraft only.
- NOTE: DME/DME/IRU or GPS required.
- NOTE: Accelerate to 250K, if unable, advise ATC.
- NOTE: WAPOM transition ATC assigned except aircraft landing: MCO, DAB, and MLB terminal areas.



### TAKEOFF MINIMUMS

- Rwy 9L: Standard with minimum climb of 500' per NM to 1300.
- Rwy 9R: Standard with minimum climb of 500' per NM to 1500.
- Rwy 13: Standard with minimum climb of 500' per NM to 1800.
- Rwy 27L: Standard with minimum climb of 500' per NM to 1900.
- Rwy 27R: Standard with minimum climb of 500' per NM to 1700.
- Rwy 31: Standard with minimum climb of 500' per NM to 1400.

(NARRATIVE ON FOLLOWING PAGE)

NOTE: Chart not to scale.

# VACAY ONE DEPARTURE (RNAV)

SE-3, 09 SEP 2021 to 07 OCT 2021

SE-3, 09 SEP 2021 to 07 OCT 2021