

# HURCN ONE DEPARTURE (RNAV)

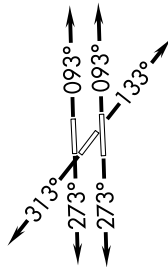
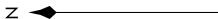
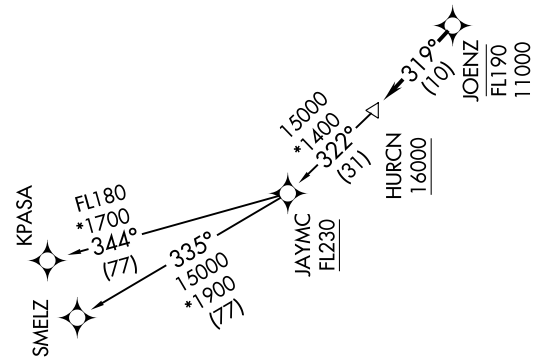
**TOP ALTITUDE:  
ASSIGNED BY ATC**

**TAKEOFF MINIMUMS**  
 Rwy 9L: Standard with minimum climb of 500' per NM to 1300.  
 Rwy 9R: Standard with minimum climb of 500' per NM to 1500.  
 Rwy 13: Standard with minimum climb of 500' per NM to 1800.  
 Rwy 27L: Standard with minimum climb of 500' per NM to 1900.  
 Rwy 27R: Standard with minimum climb of 500' per NM to 1700.  
 Rwy 31: Standard with minimum climb of 500' per NM to 1400.

NOTE: RNAV 1.  
 NOTE: RADAR required.  
 NOTE: Jet aircraft only.  
 NOTE: DME/DME/IRU or GPS required.  
 NOTE: Accelerate to 250K, if unable, advise ATC.

(NARRATIVE ON FOLLOWING PAGE)

SE-3, 09 SEP 2021 to 07 OCT 2021



ATIS 124.0  
 CLNC DEL 133.0  
 GND CON 121.7  
 TAMiami TOWER ★ 118.9 (CTAF)  
 MIAMI DEP CON 125.5 354.1

NOTE: Chart not to scale.

SE-3, 09 SEP 2021 to 07 OCT 2021

# HURCN ONE DEPARTURE (RNAV)

(HURCN1.HURCN) 12AUG21