

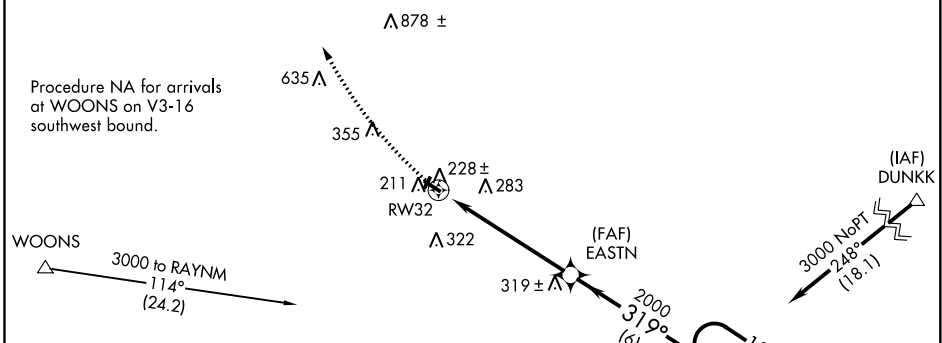
APP CRS <b>319°</b>	Rwy Idg TDZE Apt Elev	<b>3263</b> <b>121</b> <b>122</b>
------------------------	-----------------------------	---

# RNAV (GPS) RWY 32

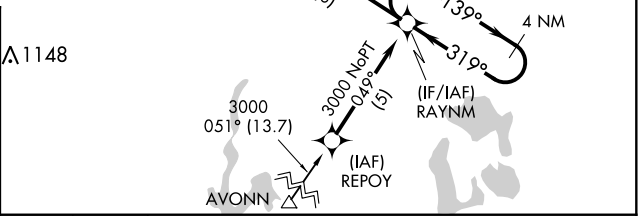
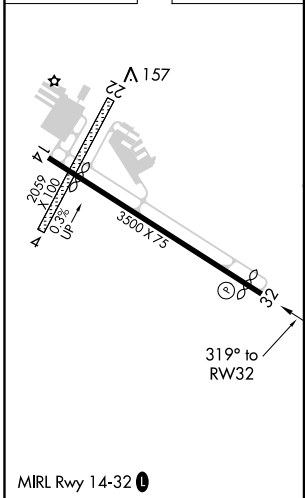
MANSFIELD MUNI (1B9)

<b>NA</b>	Use Taunton altimeter setting. DME/DME RNP-0.3 NA. Helicopter visibility reduction below 1 SM NA. Procedure NA at night.	MISSED APPROACH: Climbing right turn to 3000 direct WHYBE and hold.
-----------	--	---

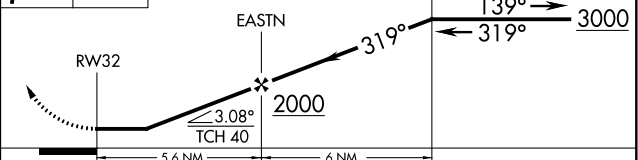
TAUNTON MUNI - KING FIELD ASOS <b>132.675</b>	BOSTON APP CON <b>124.1 382.0</b>	UNICOM <b>123.0 (CTAF)</b>
--	--------------------------------------	-------------------------------



ELEV 122	TDZE 121
----------	----------



3000 WHYBE VGSI and descent angles not coincident (VGSI Angle 4.00/TCH 38). 4 NM Holding Pattern



CATEGORY	A	B	C	D
LNAV MDA	600-1	479 (500-1)	NA	
<b>C</b> CIRCLING	640-1	518 (600-1)	NA	

NE-1, 09 SEP 2021 to 07 OCT 2021

NE-1, 09 SEP 2021 to 07 OCT 2021