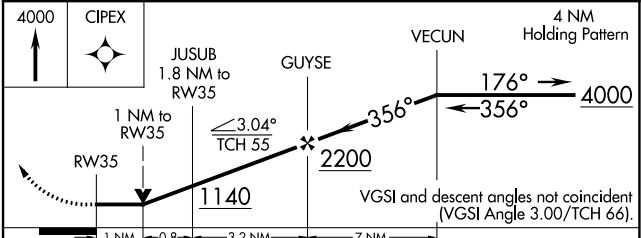
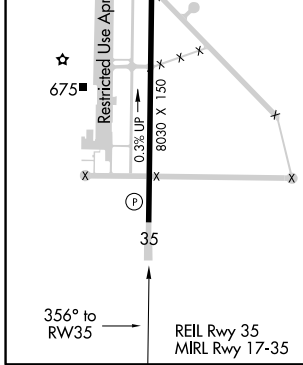
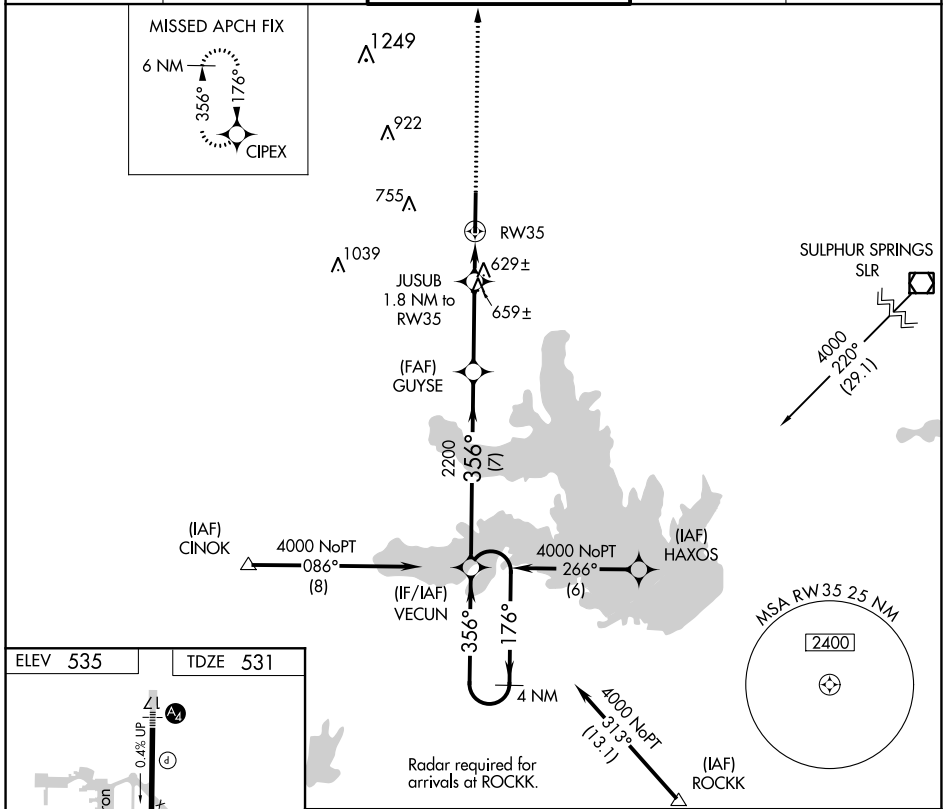


APP CRS 356°	Rwy Idg 8030
	TDZE 531
	Apt Elev 535

RNAV (GPS) RWY 35

MAJORS (GVT)

	DME/DME RNP-0.3 NA. Visibility reduction by helicopters NA. VDP NA when using Terrell altimeter setting. When local altimeter setting not received, use Terrell altimeter setting and increase all MDA 80 feet and increase LNAV Cat C, D, and E visibility ¼ mile and circling Cat E visibility ¼ mile.		MISSED APPROACH: Climb to 4000 direct CIPEX and hold, continue climb-in-hold to 4000.	
	AWOS-3 133.425	FORT WORTH CENTER 132.025 360.75	MAJORS TOWER ★ 118.65 (CTAF) 0 385.425	GND CON 121.7 335.8



CATEGORY	A	B	C	D	E
LNAV MDA	900-1 369 (400-1)			900-1¼ 369 (400-1¼)	
CIRCLING	1040-1	505 (600-1)	1040-1½ 505 (600-1½)	1100-2 565 (600-2)	1280-2¾ 745 (800-2¾)

SC-2, 09 SEP 2021 to 07 OCT 2021

SC-2, 09 SEP 2021 to 07 OCT 2021