


LOC I-MMU 110.3	APP CRS 229°	Rwy ldg 5998
		TDZE 184
		Apt Elev 187

ILS or LOC RWY 23

MORRISTOWN MUNI (MMU)

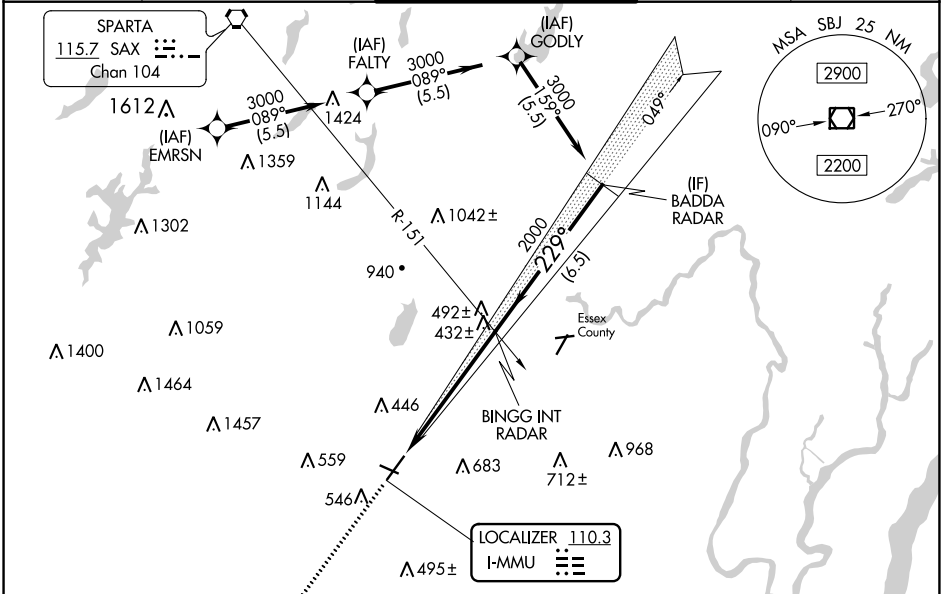
RNAV 1-GPS or RADAR required for procedure entry.
From EMRSN: RNAV 1-GPS required.

⚠ Circling to Rwy 13, 31 NA at night. Autopilot coupled approach NA below 732. For inop ALS, increase S-LOC 23 Cats C/D visibility to 1 3/8 SM.

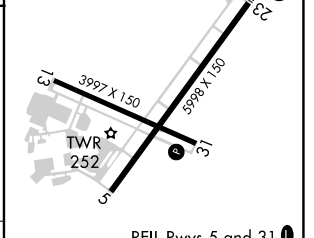
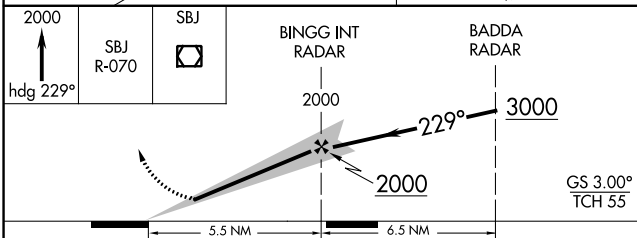
MALSR 

MISSED APPROACH: Climb to 2000 on heading 229° and on SBJ VOR/DME R-070 to SBJ VOR/DME and hold.

ATIS 124.25	NEW YORK APP CON 127.6 379.9	MORRISTOWN TOWER ★ 118.10 (CTAF) 353.9	GND CON 134.2	CLNC DEL 128.6
-----------------------	--	--	-------------------------	--------------------------






ELEV 187	TDZE 184
----------	----------



CATEGORY	A	B	C	D
S-ILS 23		384-1/2	200 (200-1/2)	
S-LOC 23	700-1/2	516 (600-1/2)	700-1	516 (600-1)
C CIRCLING	860-1 673 (700-1)	900-1 713 (800-1)	1000-2 1/2 813 (900-2 1/2)	1200-3 1013 (1100-3)

FAF to MAP 5.5 NM					
Knots	60	90	120	150	180
Min:Sec	5:30	3:40	2:45	2:12	1:50

REIL Rwy 5 and 31 
 HIRL Rwy 5-23 
 MIRL Rwy 13-31 

NE-2, 09 SEP 2021 to 07 OCT 2021

NE-2, 09 SEP 2021 to 07 OCT 2021