

APP CRS	Rwy ldg	<b>3510</b>
<b>301°</b>	TDZE	<b>2974</b>
	Apt Elev	<b>2977</b>

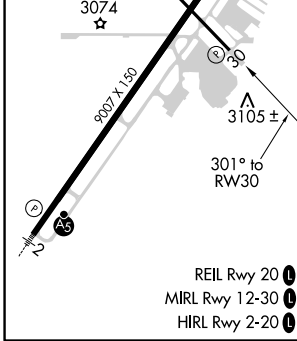
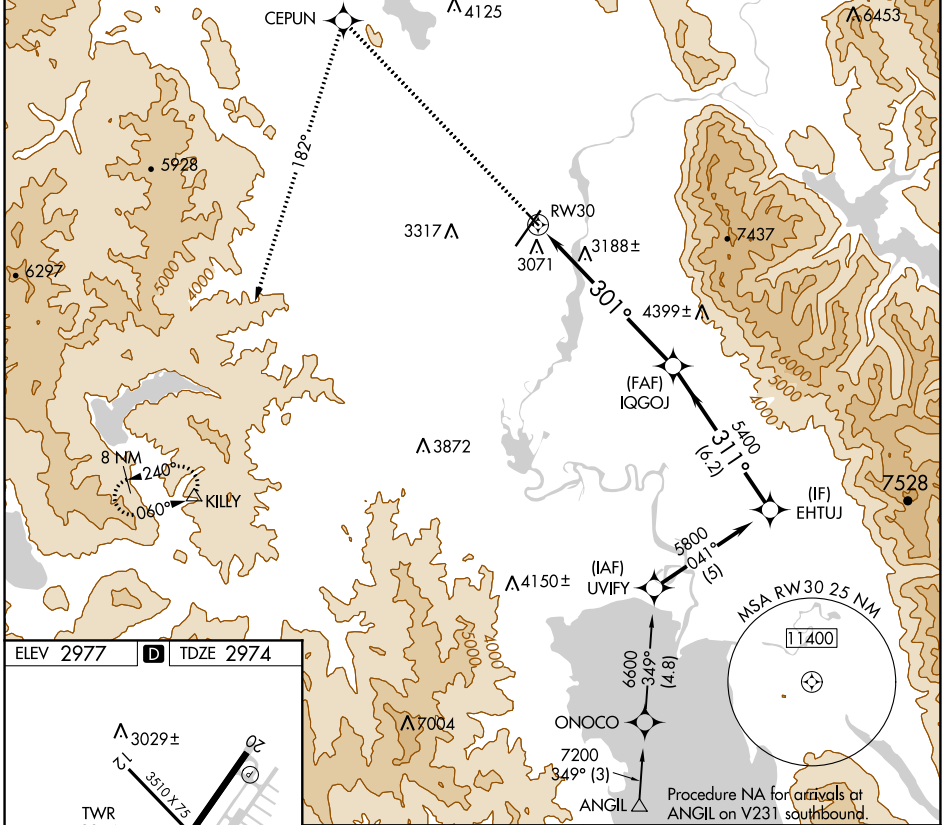
# RNAV (GPS) RWY 30

GLACIER PARK INTL (GPI)

RNP APCH.	
	Rwy 30 helicopter visibility reduction below 3/4 SM NA.
	-15°C

MISSED APPROACH: Climb to 12000 direct CEPUN and left turn via track 182° to KILLY and hold, continue climb-in-hold to 12000.

ATIS	SALT LAKE CENTER	GLACIER TOWER*	GND CON	UNICOM
<b>132.625</b>	<b>133.4 285.4</b>	<b>124.55 (CTAF) 0</b>	<b>121.6</b>	<b>122.95</b>



12000	CEPUN	KILLY	Procedure NA for arrivals at ANGIL on V231 southbound.
			EHTUJ
	182° tr		
	RWY 30	301°	311°
		5400	5800
		≤ 3.21°	Procedure Turn NA
		TCH 45	
		7 NM	6.2 NM

REIL Rwy 20				
MIRL Rwy 12-30				
HIRL Rwy 2-20				
	CIRCLING			
CATEGORY	A	B	C	D
LNAV MDA	3500-1	526 (600-1)	3500-1½	526 (600-1½)
	3520-1	3580-1	3640-1¾	3760-2½
	543 (600-1)	603 (700-1)	663 (700-1¾)	783 (800-2½)

NW-1, 09 SEP 2021 to 07 OCT 2021

NW-1, 09 SEP 2021 to 07 OCT 2021