

WAAS CH 93815 W36A	APP CRS 002°	Rwy Idg 5010
		TDZE 293
		Apt Elev 294

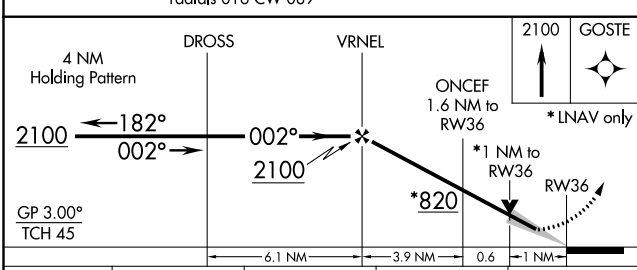
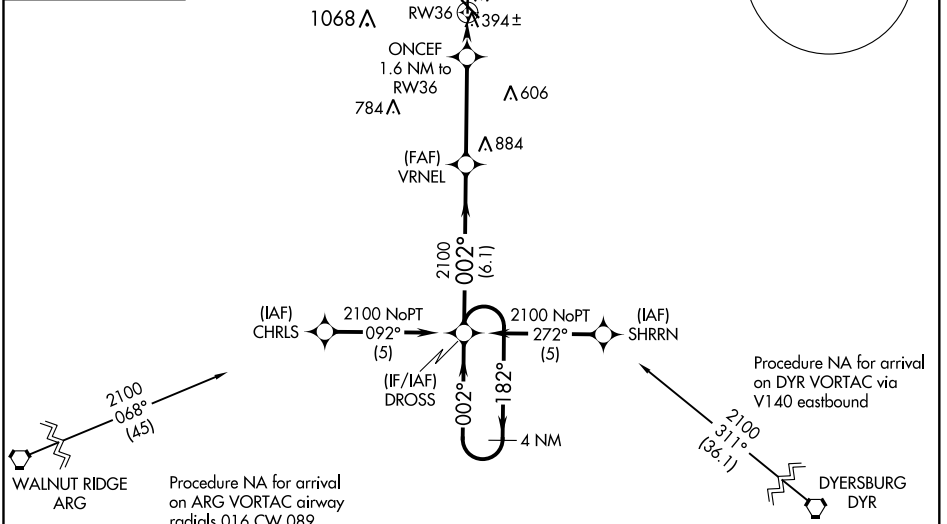
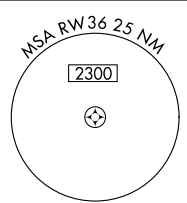
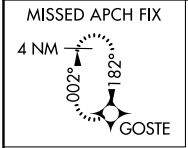
RNAV (GPS) RWY 36

MALDEN RGNL (MAW)

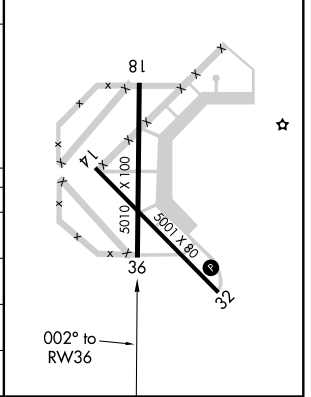
NA DME/DME RNP-0.3 NA. When local altimeter setting not received, use Poplar Bluff altimeter setting and increase all DA 50 feet, all MDA 60 feet and LNAV Cat C visibility ¼ mile. For uncompensated Baro-VNAV systems, LNAV/VNAV NA below -1.5°C (5°F) or above 54°C (130°F). Baro-VNAV and VDP NA when using Poplar Bluff altimeter setting.

MISSED APPROACH: Climb to 2100 direct GOSTE and hold.

AWOS-3PT 119.825	MEMPHIS CENTER 133.65 292.15	GCO 135.075	UNICOM 122.8 (CTAF)
----------------------------	--	-----------------------	-------------------------------



ELEV 294	TDZE 293
REIL Rwy 14 and 32	MIRL Rwy 14-32 and 18-36



CATEGORY	A	B	C	D
LPV DA	543-1	250 (300-1)		NA
LNAV/VNAV DA	698-1½	405 (500-1½)		NA
LNAV MDA	660-1	367 (400-1)		NA
CIRCLING	720-1 426 (500-1)	820-1 526 (600-1)	820-1½ 526 (600-1½)	NA

NC-3, 09 SEP 2021 to 07 OCT 2021

NC-3, 09 SEP 2021 to 07 OCT 2021