

WAAS CH <b>61315</b> <b>W14A</b>	APP CRS <b>137°</b>	Rwy Idg TDZE <b>292</b> Apt Elev <b>294</b>	<b>5001</b>
--	------------------------	---	-------------

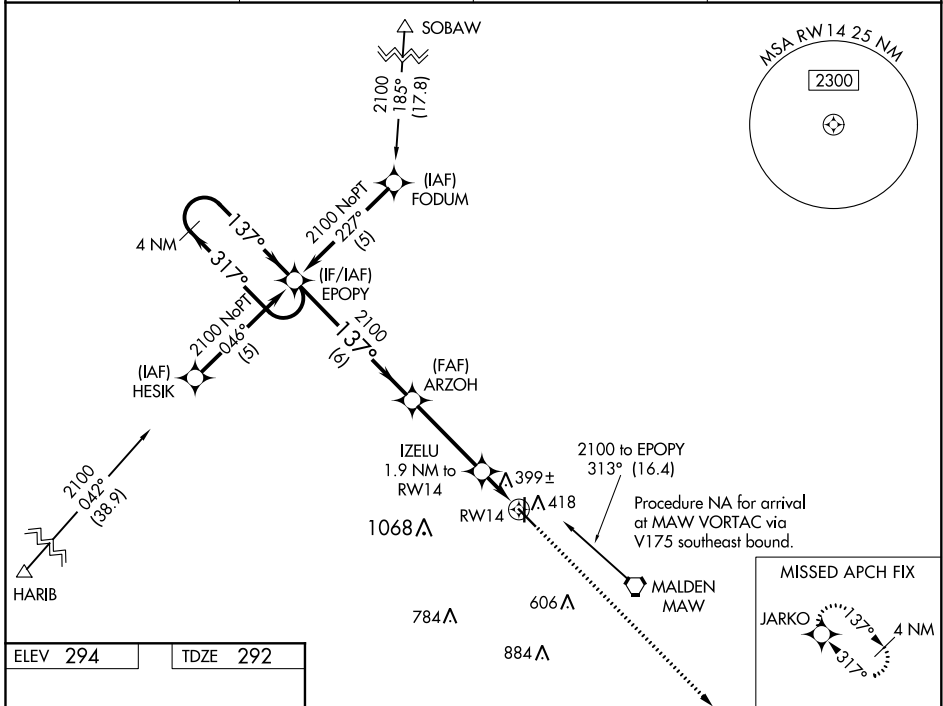
# RNAV (GPS) RWY 14

MALDEN RGNL (MAW)

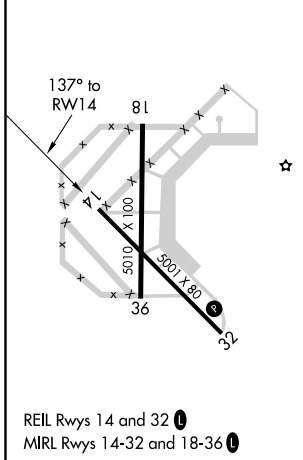
**NA** DME/DME RNP-0.3 NA. When local altimeter setting not received, use Poplar Bluff altimeter setting and increase all DA 50 feet, all MDA 60 feet, LNAV/VNAV all Cats and LNAV Cat C visibilities ¼ mile. For uncompensated Baro-VNAV systems, LNAV/VNAV NA below -15°C (5°F) or above 54°C (130°F). Baro-VNAV and VDP NA when using Poplar Bluff altimeter setting.

**MISSED APPROACH:** Climb to 2100 direct JARKO and hold.

AWOS-3PT <b>119.825</b>	MEMPHIS CENTER <b>133.65 292.15</b>	GCO <b>135.075</b>	UNICOM <b>122.8 (CTAF) 0</b>
----------------------------	--	-----------------------	---------------------------------



ELEV 294	TDZE 292
----------	----------



	EPOPY	ARZOH	IZELU 1.9 NM to RW14	JARKO
	4 NM Holding Pattern			2100
	2100 ← 317°	137° →		
	GP 3.00°	2100	*1 NM to RW14	
	TCH 40			
		6 NM	3.6 NM	0.9
CATEGORY	A	B	C	D
LPV DA	542-1 250 (300-1)			NA
LNAV/VNAV DA	698-1½ 406 (500-1½)			NA
LNAV MDA	660-1 368 (400-1)			NA
CIRCLING	720-1 426 (500-1)	820-1 526 (600-1)	820-1½ 526 (600-1½)	NA

NC-3, 09 SEP 2021 to 07 OCT 2021

NC-3, 09 SEP 2021 to 07 OCT 2021