

APP CRS 222°	Rwy Idg 5997
	TDZE 3373
	Apt Elev 3374

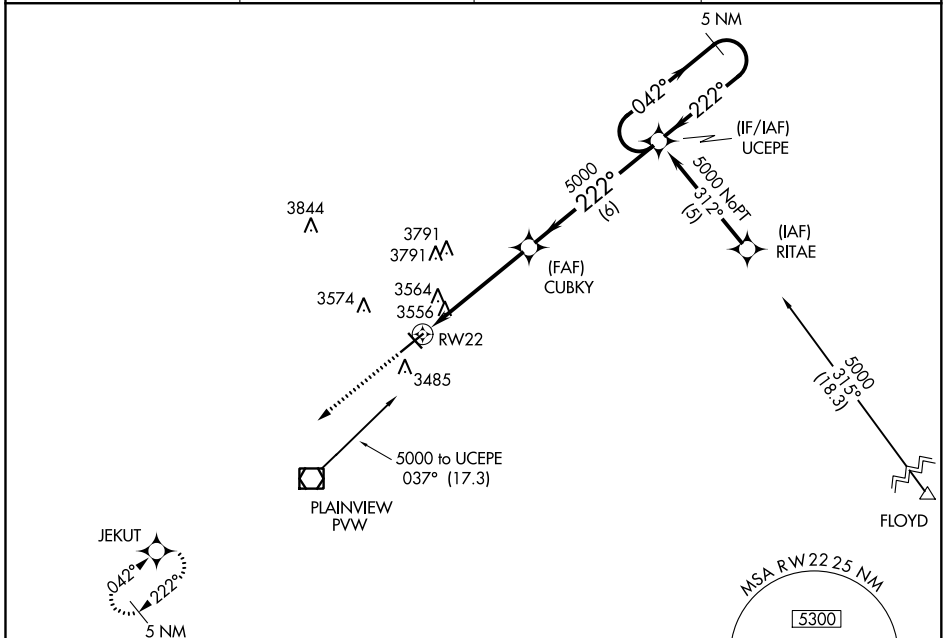
RNAV (GPS) RWY 22

HALE COUNTY (PVW)

⚠ DME/DME RNP-0.3 NA. When local altimeter setting not received, use Lubbock altimeter setting and increase all MDAs 100 feet and increase Circling Cat C/D visibility ½ SM. Visibility reduction by helicopters NA.

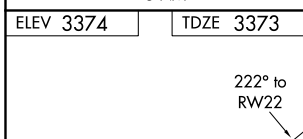
MISSED APPROACH: Climb to 5100 direct JEKUT and hold.

AWOS-3 119.675	LUBBOCK APP CON 119.2 351.8	CLNC DEL 121.7	UNICOM 123.0 (CTAF) 0
--------------------------	---------------------------------------	--------------------------	---------------------------------

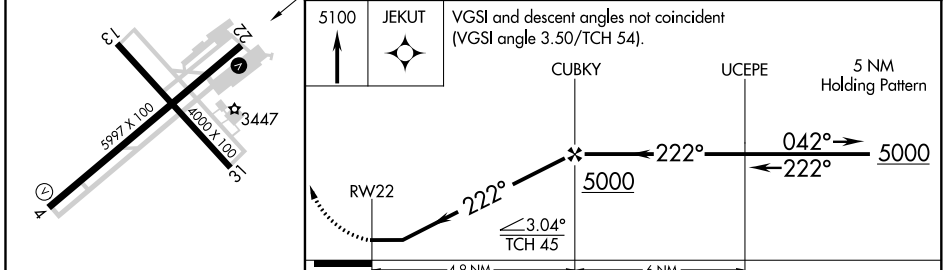


SC-2, 09 SEP 2021 to 07 OCT 2021

SC-2, 09 SEP 2021 to 07 OCT 2021



Procedure NA for arrivals at PVW VOR/DME via V81 southbound.



CATEGORY	A	B	C	D
	3820-1	447 (500-1)	3820-1¼ 447 (500-1¼)	3820-1½ 447 (500-1½)
LNNAV MDA	3940-1	566 (600-1)	4160-2¼ 786 (800-2¼)	4160-2½ 786 (800-2½)
CIRCLING				

REIL Rwy 4 and 22
LIRL Rwy 4-22 and 13-31 0