

WAAS CH 72639 W04A	APP CRS 040°	Rwy Idg TDZE 900 Apt Elev 900	4999
--	------------------------	---	-------------

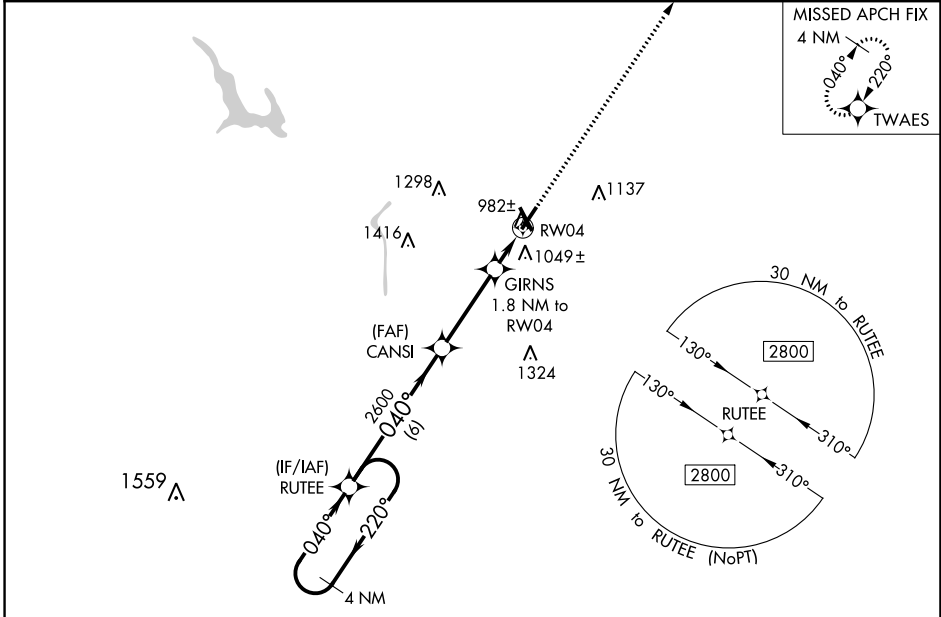
RNAV (GPS) RWY 4

ZANESVILLE MUNI (ZZV)

⚠ For uncompensated Baro-VNAV systems, LNAV/VNAV NA below -21°C (-5°F) or above 54°C (130°F). Baro-VNAV and VDP NA when using Newark altimeter setting. DME/DME RNP-0.3 NA. When local altimeter setting not received, use Newark altimeter setting and increase all LPV and LNAV/VNAV DA to 1214 and all visibilities to 1 SM, increase all MDA 80 feet; increase LNAV Cat C/D visibility 1/8 SM and Circling Cat C/D visibility 1/4 SM.

MISSED APPROACH:
Climb to 2900 direct TWAES and hold.

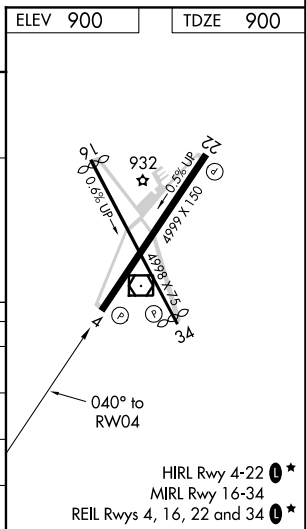
ASOS 114.95	INDIANAPOLIS CENTER 124.45 370.9	UNICOM 123.0 (CTAF) 0*
-----------------------	--	----------------------------------



EC-2, 09 SEP 2021 to 07 OCT 2021

EC-2, 09 SEP 2021 to 07 OCT 2021

4 NM Holding Pattern		VGSI and RNAV glidepath not coincident (VGSI Angle 3.00/TCH 35).		ELEV 900	TDZE 900
RUTEE		CANSI	GIRNS 1.8 NM to RW04	2900	TWAES
2800 ← 220° / 040° →		2600	*1 NM to RW04	↑	✦
GP 3.00° TCH 45		*1500	RW04	*LNAV only	
6 NM		3.4 NM	0.8 NM	1 NM	
CATEGORY	A	B	C	D	
LPV DA		1150-7/8	250 (300-7/8)		
LNAV/VNAV DA		1150-7/8	250 (300-7/8)		
LNAV MDA		1240-1	340 (400-1)		
CIRCLING	1380-1 480 (500-1)	1400-1 500 (500-1)	1620-2 720 (800-2)	1620-2 1/4 720 (800-2 1/4)	



HIRL Rwy 4-22 0*
MIRL Rwy 16-34
REIL Rws 4, 16, 22 and 34 0*