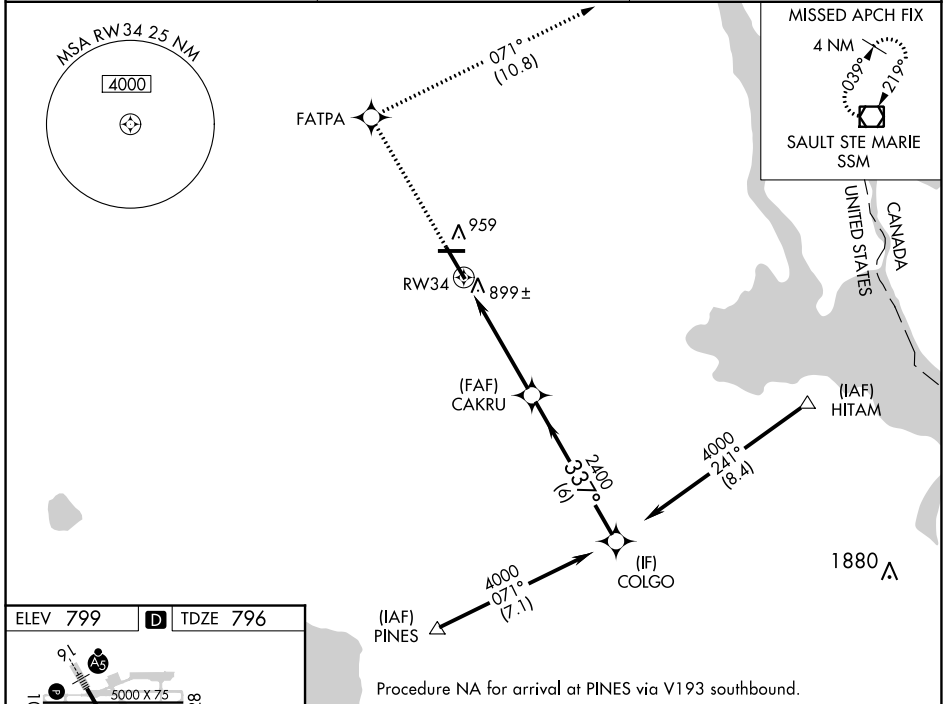


WAAS CH 56315 W34A	APP CRS 337°	Rwy Idg TDZE Apt Elev	7203 796 799
--	------------------------	-----------------------------	---

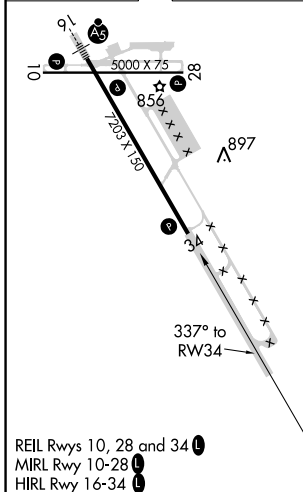
RNAV (GPS) RWY 34

CHIPPEWA COUNTY INTL (CIU)

RNP APCH.		MISSED APPROACH: Climb to 3000 direct FATPA and track 071° to SSM VOR/DME and hold.
AWOS-3PT 127.575	TORONTO CENTER 132.65 344.5	UNICOM 123.0 (CTAF)



ELEV 799	D	TDZE 796
----------	----------	----------



COLGO	CAKRU	FATPA	tr 071°	SSM
4000	2400	3000		
GP 3.00° TCH 40	337°			
	2400		*1.2 NM to RW34	*LNAV only.
	6 NM	3.7 NM	1.2 NM	
CATEGORY	A	B	C	D
LPV DA		1046-1	250 (300-1)	
LNAV/DA VNAV		1198-1½	402 (400-1½)	
LNAV MDA	1200-1	404 (400-1)	1200-1¼	404 (400-1¼)
C CIRCLING	1260-1	461 (500-1)	1260-1½	1360-2
			461 (500-1½)	561 (600-2)

EC-1, 09 SEP 2021 to 07 OCT 2021

EC-1, 09 SEP 2021 to 07 OCT 2021