

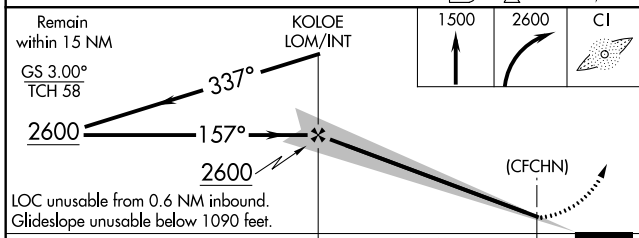
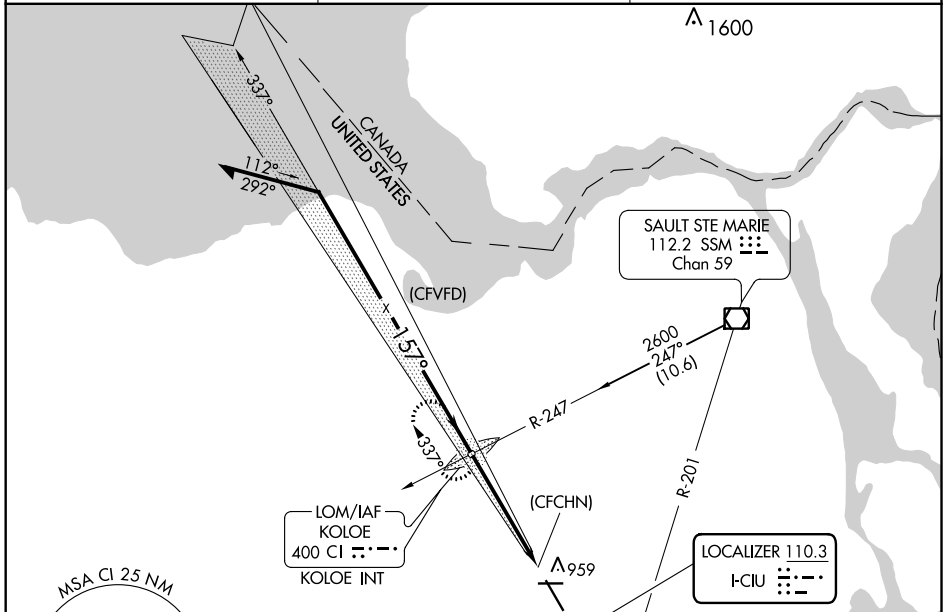
LOC I-CIU 110.3	APP CRS 157°	Rwy Idg 7203
		TDZE 799
		Apt Elev 799

ILS or LOC RWY 16

CHIPPEWA COUNTY INTL (CIU)

ADF required.	MALS R	MISSED APPROACH: Climb to 1500 then climbing right turn to 2600 direct KOLOE LOM/INT and hold. (TACAN aircraft climb to 5000 on heading 160° and SSM VOR/DME R-201 to PINES/SSM 24 DME and hold south, right turn, 021° inbound.)
▼ ▲NA Autopilot coupled approach NA below 1380.	▲5	

AWOS-3PT 127.575	TORONTO CENTER 132.65 344.5	UNICOM 123.0 (CTAF) 0
----------------------------	---------------------------------------	---------------------------------



ELEV 799	TDZE 799
157° 5.3 NM from FAF	5000 X 75
REIL Rwy 10, 28 and 34	MRL Rwy 10-28
	HIRL Rwy 16-34
FAF to MAP 4.7 NM	
Knots	60 90 120 150 180
Min:Sec	4:42 3:08 2:21 1:53 1:34

CATEGORY	A	B	C	D	E
S-ILS 16	1090-½ 291 (300-½)				
S-LOC 16	1160-½	361 (400-½)	1160-5/8	361 (400-5/8)	
▲ CIRCLING	1260-1	461 (500-1)	1260-1½	1360-2	1380-2
			461 (500-1½)	561 (600-2)	581 (600-2)

EC-1, 09 SEP 2021 to 07 OCT 2021

EC-1, 09 SEP 2021 to 07 OCT 2021