

WAAS CH <b>42520</b> <b>W23A</b>	APP CRS <b>229°</b>	Rwy Idg TDZE Apt Elev	<b>6333</b> <b>1663</b> <b>1663</b>
--	------------------------	-----------------------------	---

# RNAV (GPS) RWY 23

ADIRONDACK RGNL (SLK)

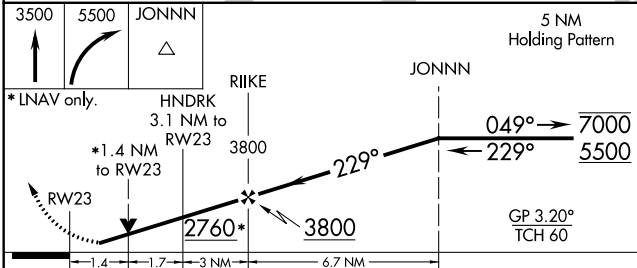
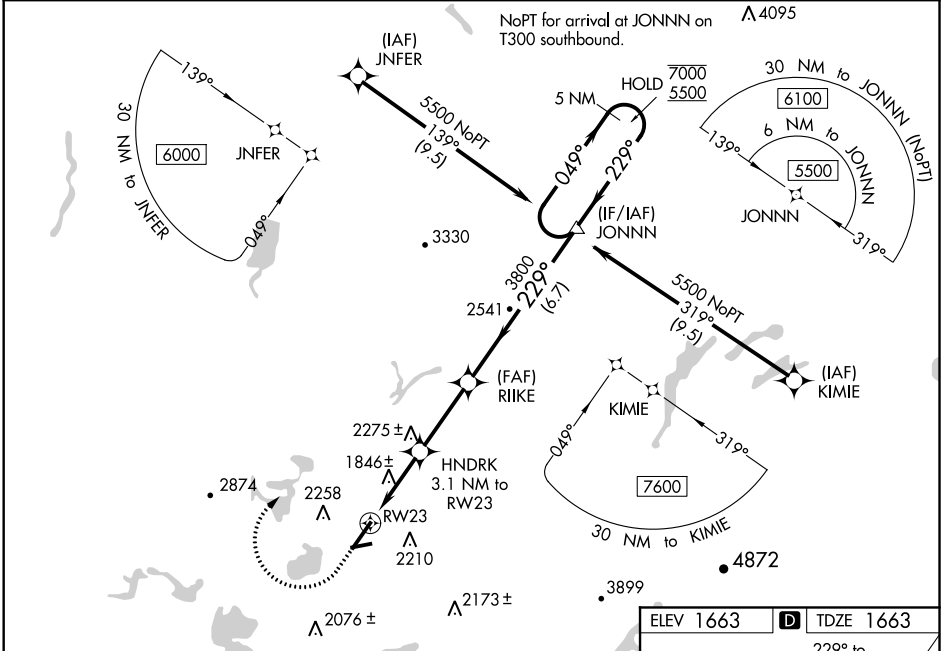
RNP APCH.

**⚠** Circling Rwy 5, 9, 27 NA at night. For uncompensated Baro-VNAV systems, LNAV/VNAV NA below -29°C or above 54°C. LNAV/VNAV and LNAV only Rwy 23 helicopter visibility reduction below 3/4 SM NA. For inop ALS, increase LNAV/VNAV all Cats visibility to 1 3/4 SM and LNAV Cats A/B to 1 SM.

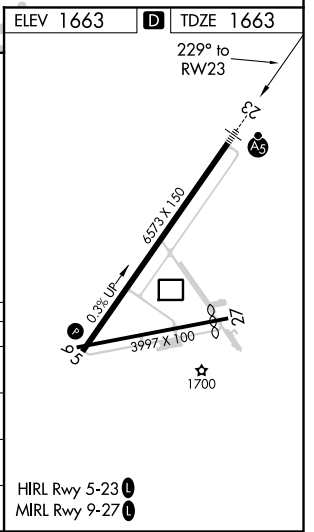
MALSR **AS**

**MISSED APPROACH:** Climb to 3500 then climbing right turn to 5500 direct JONNN and hold.

ASOS <b>124.175</b>	BOSTON CENTER <b>120.35 342.25</b>	UNICOM <b>123.0 (CTAF) 0</b>
------------------------	---------------------------------------	---------------------------------



CATEGORY	A	B	C	D
LPV DA		1863-1/2	200 (200-1/2)	
LNAV/VNAV DA		2150-1	487 (500-1)	
LNAV MDA	2200-3/4	537 (600-3/4)	2200-1	537 (600-1)
<b>C</b> CIRCLING	2500-1 1/4 837 (900-1 1/4)	2660-1 1/2 997 (1000-1 1/2)	2660-3 997 (1000-3)	2700-3 1037 (1100-3)



NE-2, 09 SEP 2021 to 07 OCT 2021

NE-2, 09 SEP 2021 to 07 OCT 2021