

# KUSSO EIGHT DEPARTURE (RNAV)

SC-2, 09 SEP 2021 to 07 OCT 2021

## TOP ALTITUDE: ASSIGNED BY ATC

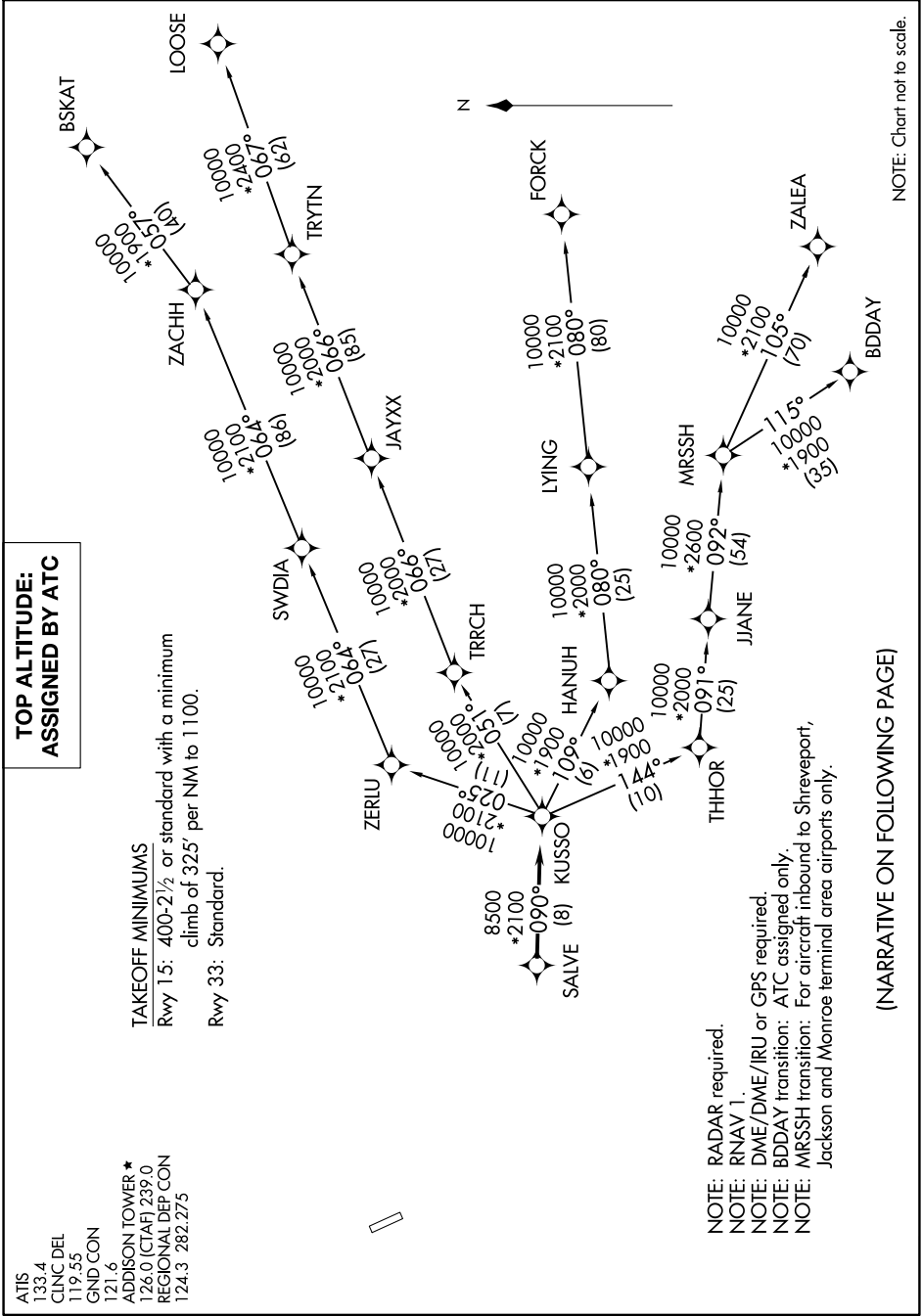
### TAKEOFF MINIMUMS

Rwy 15: 400-2½ or standard with a minimum climb of 325' per NM to 1100.  
Rwy 33: Standard.

ATIS 133.4  
CLNC DEL 119.55  
GND CON 121.6  
ADDISON TOWER \* 128.0 (CTAF) 239.0  
REGIONAL DEP CON 124.3 282.275

# KUSSO EIGHT DEPARTURE (RNAV)

(KUSSO8.KUSSO) 17JUN21



(NARRATIVE ON FOLLOWING PAGE)

SC-2, 09 SEP 2021 to 07 OCT 2021