

# JOE POOL THREE DEPARTURE

## TAKEOFF MINIMUMS

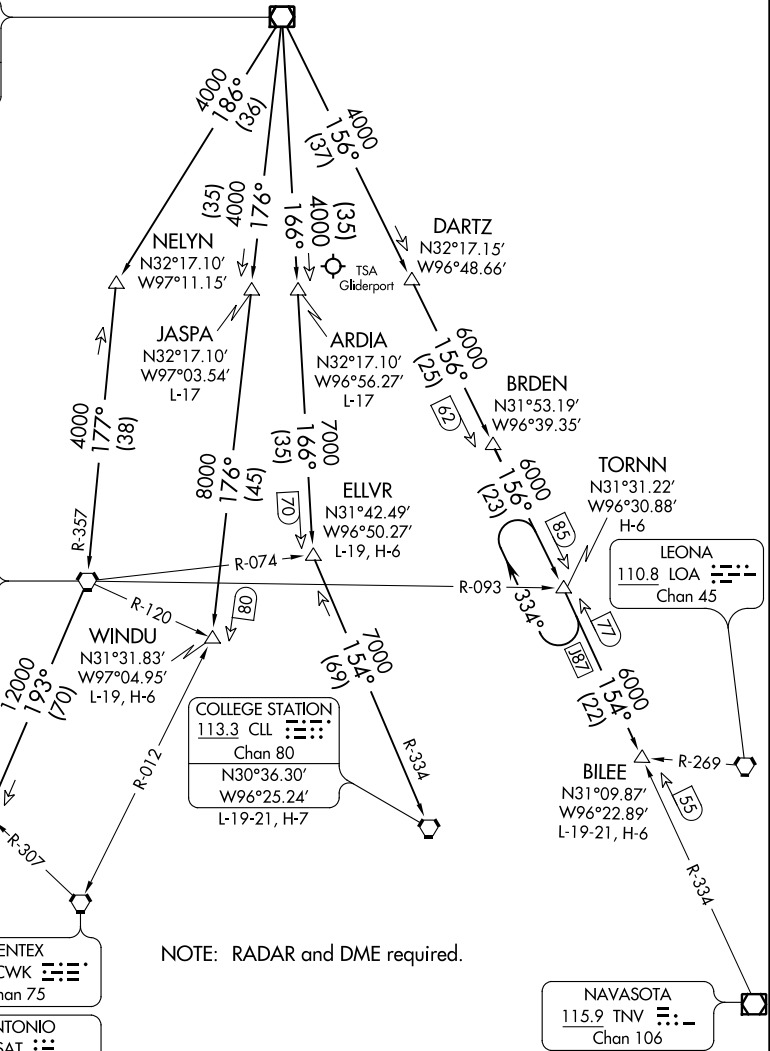
Rwy 33: Standard.

Rwy 15: 400-2½ or standard with minimum climb of 325' per NM to 1100.

ATIS 133.4  
 CLNC DEL 119.55  
 GND CON 121.6  
 ADDISON TOWER \* 126.0 (CTAF) 239.0  
 REGIONAL DEP CON 124.3 282.275

**MAVERICK**  
 113.1 TTT  
 Chan 78  
 N32°52.15'  
 W97°02.43'

**WACO**  
 115.3 ACT  
 Chan 100  
 N31°39.73'  
 W97°16.14'  
 L-19, H-6



NOTE: RADAR and DME required.

(NARRATIVE ON FOLLOWING PAGE)

NOTE: Chart not to scale.

# JOE POOL THREE DEPARTURE

SC-2, 09 SEP 2021 to 07 OCT 2021

SC-2, 09 SEP 2021 to 07 OCT 2021