

# TEEKY ONE ARRIVAL (RNAV)

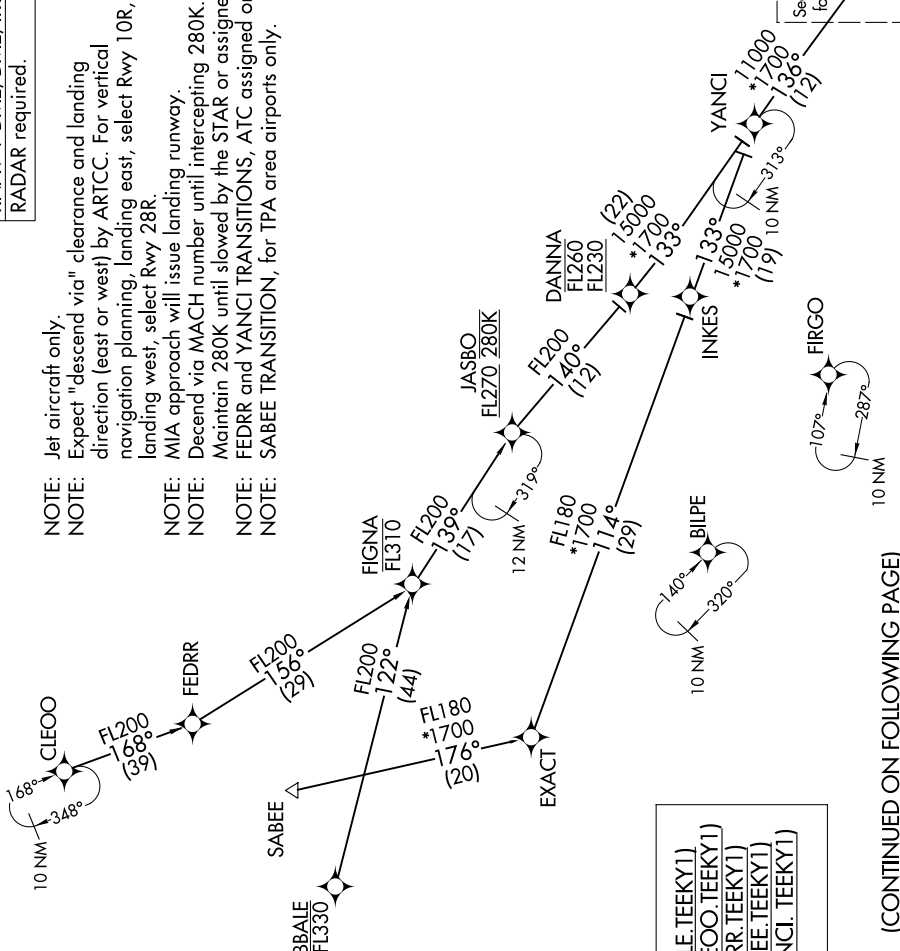
Transition Routes

FORT LAUDERDALE, FLORIDA

SE-3, 09 SEP 2021 to 07 OCT 2021

RNAV 1-DME/DME/IRU or GPS.  
RADAR required.

- NOTE: Jet aircraft only.
- NOTE: Expect "descend via" clearance and landing direction (east or west) by ARTCC. For vertical navigation planning, landing east, select Rwy 10R, landing west, select Rwy 28R.
- NOTE: MIA approach will issue landing runway.
- NOTE: Descend via MACH number until intercepting 280K.
- NOTE: Maintain 280K until slowed by the STAR or assigned by ATC.
- NOTE: FEDRR and YANCI TRANSITIONS, ATC assigned only.
- NOTE: SABEE TRANSITION, for TPA area airports only.



See following page for Arrival Routes

(CONTINUED ON FOLLOWING PAGE)

# TEEKY ONE ARRIVAL (RNAV)

Transition Routes

FORT LAUDERDALE, FLORIDA