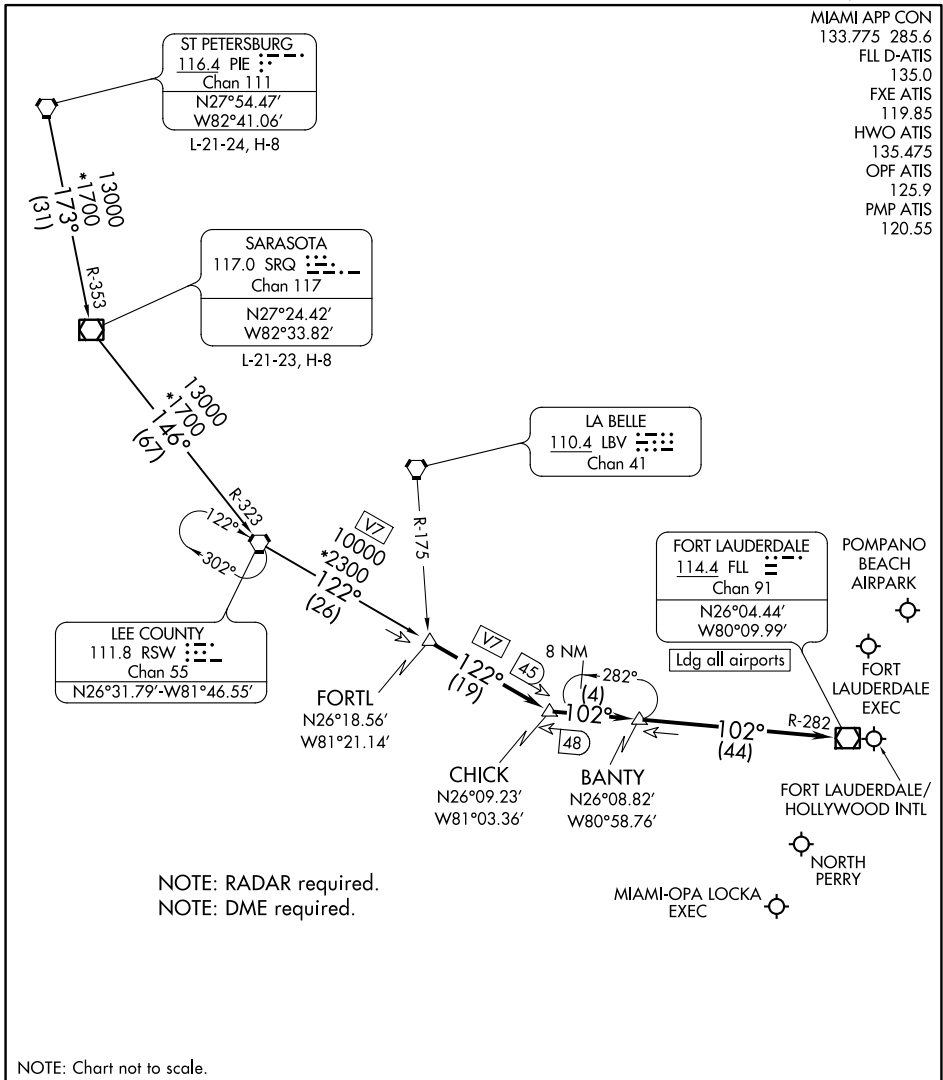


FORTL EIGHT ARRIVAL

FORT LAUDERDALE, FLORIDA



SE-3, 09 SEP 2021 to 07 OCT 2021

SE-3, 09 SEP 2021 to 07 OCT 2021

NOTE: RADAR required.
NOTE: DME required.

NOTE: Chart not to scale.

ARRIVAL ROUTE DESCRIPTION

ST PETERSBURG TRANSITION (PIE.FORTL8): From over PIE VORTAC on PIE R-173 and SRQ R-353 to SRQ VOR/DME, then on SRQ R-146 and RSW R-323 to RSW VORTAC, then on RSW R-122 to FORTL. Thence. . .

SARASOTA TRANSITION (SRQ.FORTL8): From over SRQ VOR/DME on SRQ R-146 and RSW R-323 to RSW VORTAC, then on RSW R-122 to FORTL. Thence. . .

. . . landing all airports: From FORTL on RSW R-122 to CHICK, then on FORT LAUDERDALE VOR/DME (FLL) R-282 to FLL VOR/DME. Expect RADAR vectors to final approach course.

FORTL EIGHT ARRIVAL

FORT LAUDERDALE, FLORIDA