

# FISEL SEVEN ARRIVAL (RNAV)

FORT LAUDERDALE, FLORIDA

MIAMI APP CON  
133.775 285.6  
FLL D-ATIS  
135.0  
FXE ATIS  
119.85  
HWO ATIS  
135.475  
OPF ATIS  
125.9  
PMP ATIS  
120.55

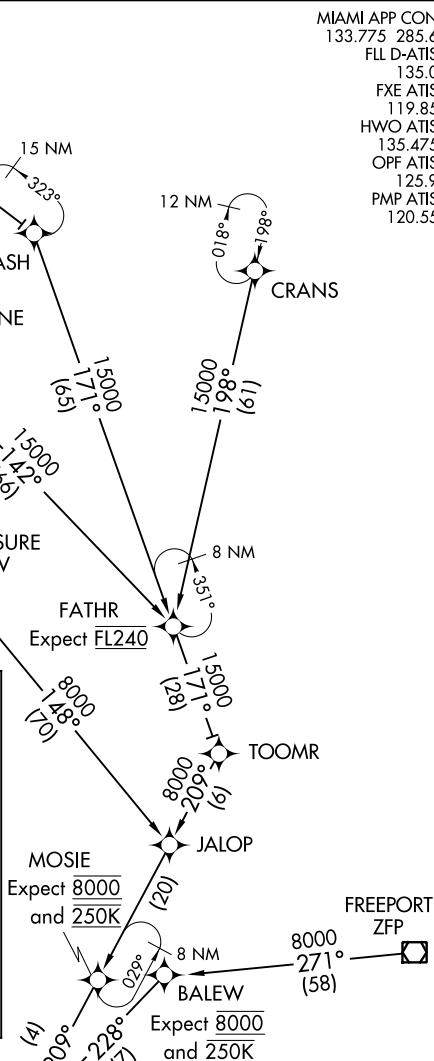
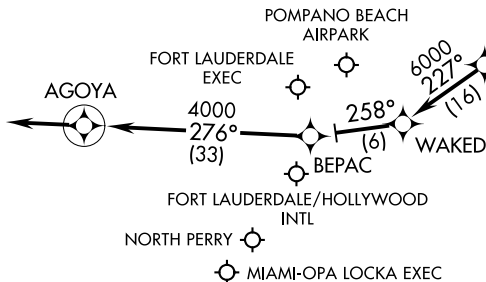
NOTE: RADAR required.  
NOTE: RNAV 1.  
NOTE: DME/DME/IRU or GPS required.  
NOTE: Turbojet aircraft only.

NOTE: Treasure transition: ATC assigned only.

## ARRIVAL ROUTE DESCRIPTION

- CRANS TRANSITION (CRANS.FISEL7)
- FREEPORT TRANSITION (ZFP.FISEL7)
- MELBOURNE TRANSITION (MLB.FISEL7)
- ORMOND BEACH TRANSITION (OMN.FISEL7)
- TREASURE TRANSITION (TRV.FISEL7)

From FISEL on track 227° to WAKED, then on track 258° to BEPAC, then on track 276° to AGOYA, then on 276° heading or as assigned by ATC. Expect RADAR vectors.



NOTE: Landing FXE, HWO, OPF, PMP: Expect RADAR vectors prior to WAKED.  
NOTE: FLL Landing West: Expect RADAR vectors to final approach course after FISEL.  
NOTE: FLL Landing East: Expect RADAR vectors to final approach course prior to AGOYA.

NOTE: Chart not to scale.

# FISEL SEVEN ARRIVAL (RNAV)

FORT LAUDERDALE, FLORIDA