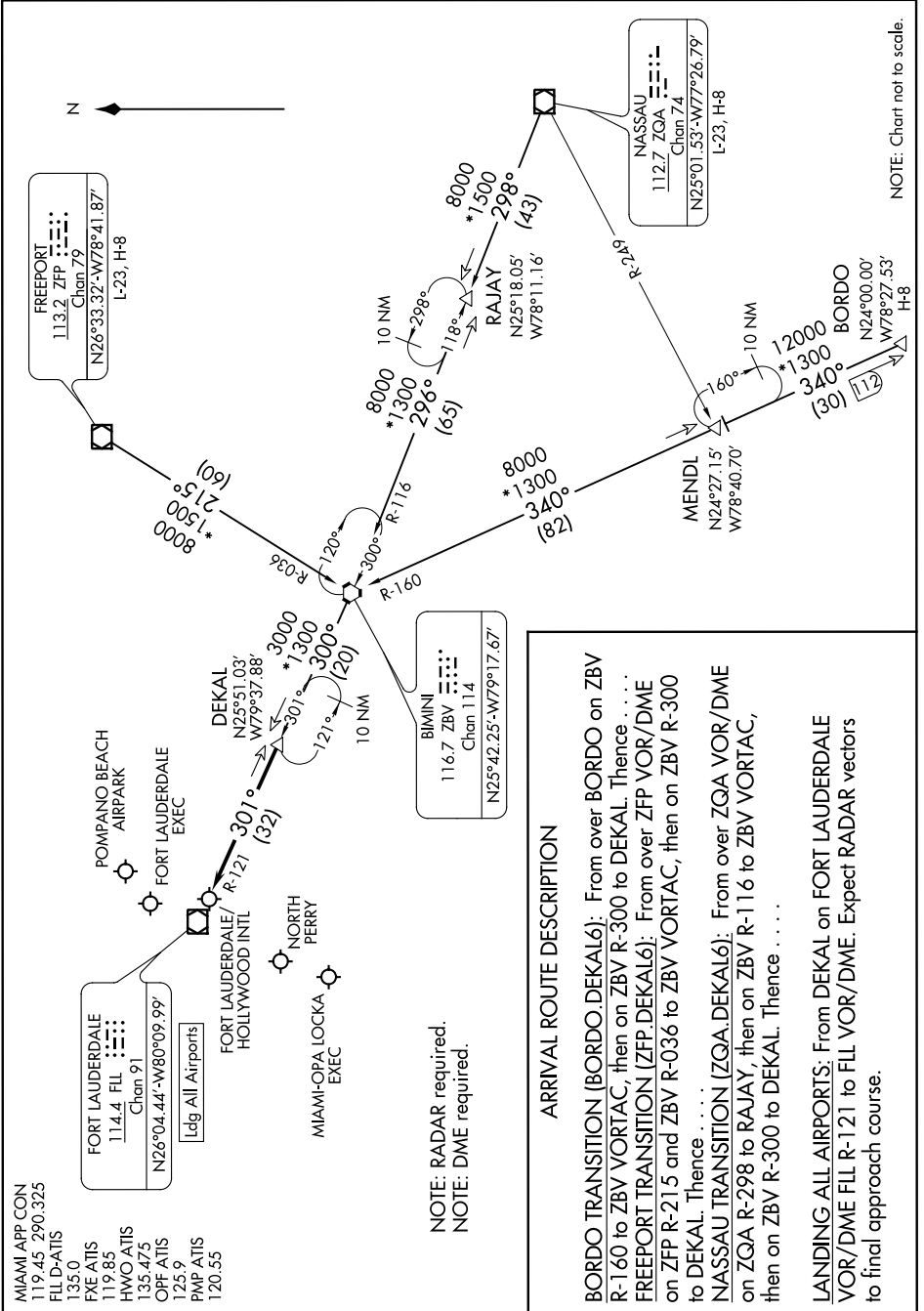


SE-3, 09 SEP 2021 to 07 OCT 2021



NOTE: Chart not to scale.

ARRIVAL ROUTE DESCRIPTION

BORDO TRANSITION (BORDO.DEKAL6): From over BORDO on ZBV R-160 to ZBV VORTAC, then on ZBV R-300 to DEKAL. Thence
FREEPORT TRANSITION (ZFP.DEKAL6): From over ZFP VOR/DME on ZFP R-215 and ZBV R-036 to ZBV VORTAC, then on ZBV R-300 to DEKAL. Thence
NASSAU TRANSITION (ZQA.DEKAL6): From over ZQA VOR/DME on ZQA R-298 to RAJAY, then on ZBV R-116 to ZBV VORTAC, then on ZBV R-300 to DEKAL. Thence
LANDING ALL AIRPORTS: From DEKAL on FORT LAUDERDALE VOR/DME FLL R-121 to FLL VOR/DME. Expect RADAR vectors to final approach course.

NOTE: RADAR required.
 NOTE: DME required.

SE-3, 09 SEP 2021 to 07 OCT 2021